

ARC 2014 Comprehensive Building Studio, Maria Denegri
Winter 2024 | **Interstitial Space**

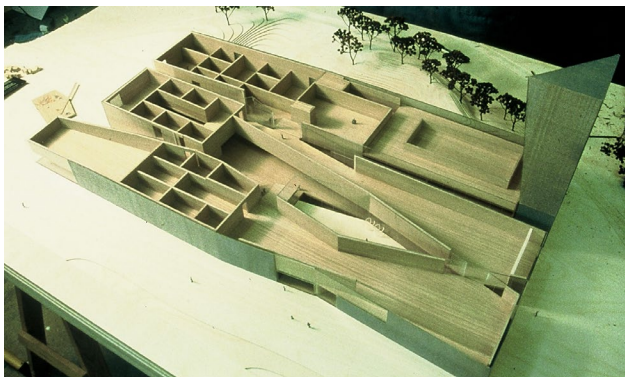


The Interstitial

In the Comprehensive Building Studio, we strive to create projects that are driven by inventive and provocative compositional and spatial strategies; that are both inwardly coherent and urbanistically rich. Complex buildings are not oversized diagrams indicating prescribed routines and activities, but rather materially rich environments that are unpredictable, dynamic and that foster conversation and insight; that harbor the unexpected; that are capable of both subtle and profound change over time.

The Interstitial- literally the space between- will be mobilized in the Denegri studio to harness the diversity and the complexity required of contemporary architecture.

Interstitial 1: Primary Spaces | Blurred Edges | Order and Variation

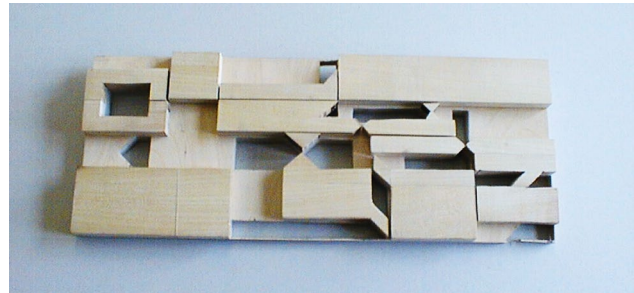


The primary requirements in the program must be interrogated and tested against the following:

- >The site and opportunities that it presents
- >Competing programs and varied uses both in time and space

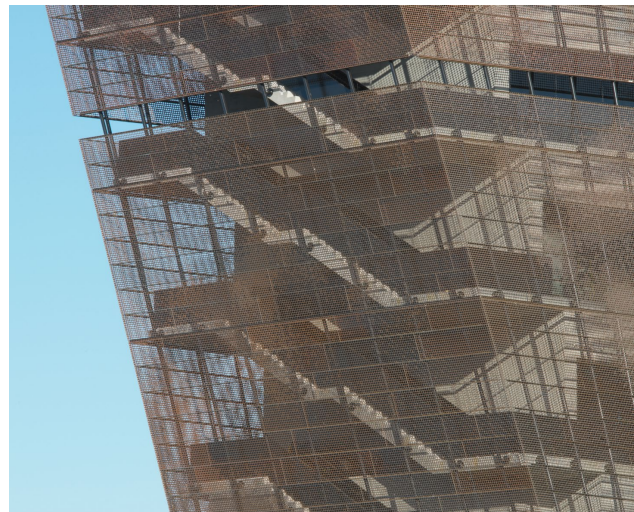
The overlapping conditions that this analysis produces can be understood as opportunities rather than anomalies. While 20th century high modern architecture required strict registration of program to space over an assumed grid, current technologies, building systems and spatial concepts accept more fluid strategies. Students will develop plans and massing diagrams that explore order and overlap in the pursuit of rich and varied spatial conditions in their projects.

Interstitial 2: Poche Spaces | Combinations and Permutations | Materiality



Poche space- literally thickened space - both solves important functional problems, while 'producing' primary spaces in its absence. In plan and in the building massing these are the contested areas that the friction between primary programs produces. In section, these areas are to be developed as the solid but porous material that define the structure, the mechanical systems and the support infrastructure of the project.

Interstitial 3- Thickened Envelope | Interior and Exterior | Modulation



The modernist pursuit of a slender and ephemeral building skin has given way to more productive conversations and strategies for the building envelope driven by thermal performance without compromising access to light and air. Through intensive development of detail models and cut-aways, Students will be tasked with developing dynamic and 'thick' building envelopes without compromising spatial flow and programmatic efficiency.

Through the strategies of **The Interstitial** outlined above, students will develop detailed building projects that are spatially rich and dynamic while also fulfilling the strong ambition of the Comprehensive Building Studio toward a sustainable architecture.