

Instructor: Brigitte Shim

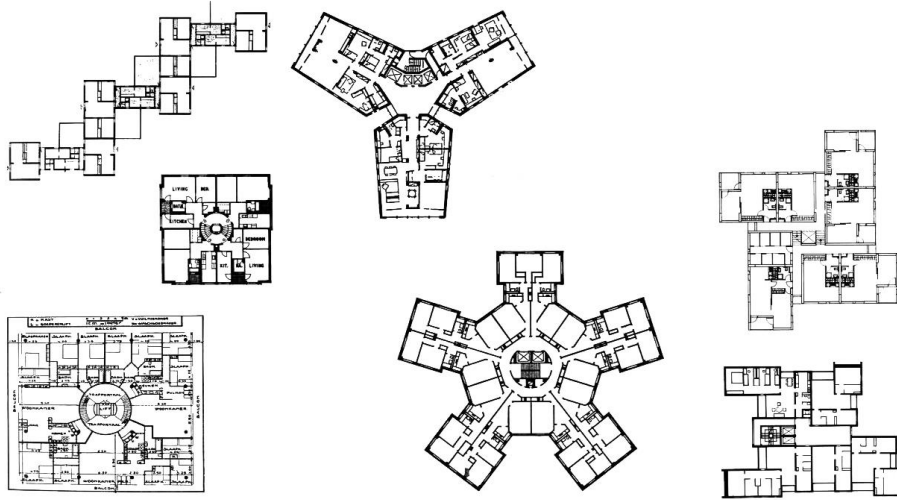


Image: Modern Housing Prototypes by Roger Sherwood. Pages 7-8. Published by Harvard University Press; Illustrated edition (April 15, 1981)

Architecture has always played a critical role in shaping the collective and individual spaces of our cities. Housing as an urban architecture acts as a robust frame for public life. The dwelling is a frame for our everyday lives. Is it time for housing to do more? Can housing linked with other programmes reshape our cities in vital and unexpected ways?

This studio will investigate and explore hybrid prototypes that intertwine housing, sustainability, landscape, and community. The overall aim is densifying our cities while ensuring they are humane places for community. This studio expands the role of design beyond the formal ensuring meaningful engagement with social, cultural, political, and technical issues ensuring that the design propositions emerging from this studio can shape the cities of the future. Each student will be asked to work at several scales of investigation understanding the interrelationship between the scale of the city, the scale of the building and the scale of an individual dwelling.

Drawings and models at three distinct scales of investigation will be developed, presented, and represented throughout the term. The studio will also investigate light, materiality and space through drawings and models.

Students selecting this studio will be asked to explore and interrogate housing plus an additional programmatic element of your choice. Each student will create a hybrid prototype intertwining housing with other programmes to rethink the nature of community. Your selection of programme will necessitate rethinking questions of circulation, accessibility, public and private and you will provide innovative response to the typology of housing.