

PROF. JOHN W. DANAHY

LANDSCAPE ARCHITECT // LANDSCAPE PLANNER // URBAN DESIGNER

CURRICULUM VITAE

FACULTY ADDRESS

Faculty of Architecture, Landscape, and Design
Centre for Landscape Research
University of Toronto
230 College Street, Toronto, Ontario M5T 1R2
905-460-5564

HOME ADDRESS

917 Goodwin Road, Mississauga, Ontario L5G 4J9
905-278-4167

Digital Library

Spatial Literacy

Urban Metrics
& Analysis

Tool Design

Ecology

Teaching
Landscape
Architecture

Socio-Behavioural
Design

TABLE OF CONTENTS

A. INTRODUCTION

A1. Bio	3
A2. Guide to this Graphic CV	3

B. CAREER INFORMATION

B1. Education	5
B2. Employment	5
B3. Administration, Service & Employment	5
B4. Awards & Honours	6
B5. Professional Affiliations & Activities	6

C. RESEARCH & PRACTICE ACTIVITIES

C1. Externally Funded Academic Research & Creative Practice	7
C2. Non-Funded Research, Collaboration & Community Practice	16
C3. contributions to General Academic Infrastructure Funding	23

D. PUBLICATIONS & DISSEMINATION OF RESULTS

D1. Refereed & Professional Articles	24
D2. Digital Media (CLRnet World Wide Web – CERN)	29
D3. Exhibitions, Video & Slide Media	30
D4. Reviewer & Referee	31

E. PRESENTATIONS & SPECIAL LECTURES

	32
--	----

F. TEACHING ACTIVITIES

F1. Graduate Thesis Supervision	34
F2. Graduate Courses	38
F3. Undergraduate Courses	39

A. INTRODUCTION

A1. BIO

John Danahy is a professional Landscape Architect (CSLA, OALA w/seal) and a Full Professor (emeritus) of Landscape Architecture at the University of Toronto. He maintains a consulting practice and his involvement in academic research and community engagement work. His professional education and training is in Landscape Architecture (BLA), Urban and Regional Planning at the University of Toronto (MSc.Urb.&Reg.Pl.) and a Post Graduate Certificate in Urban Design at the Royal Danish School of Art with a specialization in public realm design (studying under Jan Gehl).

He practiced as a park master planner, a development consultant, and a design build contractor before developing the Centre for Landscape Research as a hybrid entrepreneurial research and applied practice unit at the University of Toronto. The CLR was solely funded through consulting partnerships that linked innovative practice with basic research. After joining the Faculty of Architecture, Landscape, and Design at the University of Toronto in 1981, he concentrated his creative professional practice work over 35 years through the CLR on numerous innovative commissions with consulting firms, agencies, cities and citizens groups as a means of engaging teaching and basic research in design with applied practice on real world projects.

John Danahy's professional projects focus on urban public space work that applies the innovative design and planning technologies invented under his leadership at CLR for the National Capital Commission in Ottawa-Gatineau, the City of Ottawa, the City of Toronto, the Friends of Fort York, and numerous university research labs and their partner clients. In recent years, he has worked pro bono with community groups in Lakeview and Port Credit in Mississauga and provided landscape architectural advice to Ward One Councillor Jim Tovey on the City's Waterfront public spaces and community development plans.

In terms of Research, Professor Danahy developed an internationally recognized expertise in digital media for design thinking, planning and visualization linked to performance metrics and participatory decision-making processes. He led the development of research software systems at the Centre for Landscape Research (CLR) and has been a pioneer in the use of computing (CAD - GIS) and virtual reality in urban design and landscape architectural practice.

His teaching has spanned most aspects of the landscape architecture curriculum from ecological design, open space planning, human scale social design to site engineering, low impact development, and professional practice at both the graduate and undergraduate levels. He also taught in urban design, planning, architecture, and computer science. In 2015, he received the Canadian Society of Landscape Architects Teaching Award. As a core design studio teacher and thesis advisor, he contributed to the professional education of a significant number of Canada's recent generations of landscape architects.

A2. GUIDE TO THIS GRAPHIC CV

In his capacity as a core faculty member, he was charged with teaching across all aspects and levels of the landscape architecture professional curriculum and in its allied professions in planning and architecture. Prof. Danahy's CV addresses an extensive range of teaching and creative projects.

The CV is organized in major categories of work and responsibility. It begins with descriptive career information in Section B. Section C1 lists the Core Funded Research and Professional work. Section C2 lists the Non funded professional and research work. As an academic practice much of the professional activity has been done pro bono with no consultancy fee or grant. All of the projects accepted by CLR in Section C were vetted for their importance to the public interest or for the potential to advance knowledge or innovation in disciplinary technique. The remaining sections list traditional scholarly and teaching activities. Section D lists publications and knowledge dissemination, Section E covers presentations and lectures. Section F lists teaching activities and graduate thesis supervision.

The activities listed throughout the CV are organized graphically with the use of coloured themes illustrating how individual projects have been woven together as a hybrid research practice that incrementally builds on key long term thematic areas of research inquiry and practice. The clustering and synergy between projects that contribute to each thematic area of expertise are mapped in timeline diagrams at section headings as coloured core themes. These are depicted and layered as coloured zones (one colour for each major theme).

The major recurring themes shown in the CV are: * example topics are shown in the theme colour)

Spatial Literacy (**VISUALIZATION, 3D CITY MODELLING, VIEWS ANALYSIS, PUBLIC ENGAGEMENT**).

Urban Metrics & Analysis (**GIS LINKED CAD, ECONOMIC CAPACITY ANALYSIS, HEAT ISLAND**)

Tool Design - Custom Software Systems for Design Thinking (**GIS - CAD - POLYTRIM -**)

Ecology (**3D LANDSCAPE MODELS - GEODESIGN - CLIMATE CHANGE VISUALIZATION**)

Urbanity (**URBANITY - HUMAN SCALE ASSESSMENT**)

Teaching Landscape Architecture (**KNOWLEDGE EXCHANGE, THESIS, STUDIO**)

Each project listed in the CV uses thematic key words to indicate a connection or contribution to the development of the thematic area of knowledge. The Overview timeline bubble maps at the beginning of each section heading.

Between pages 4 and 5 are two 11x17 fold out CV timeline maps of the overall timeline. The first map shows funded and unfunded research activities and the second map shows teaching , digital library and exhibitions. The timeline illustrates the relative position of a given project to other projects, as well as the duration and pattern of the work along with imagery from the project. It original document is intended to be used as a dynamic map viewed on a large format screen and where panning and zooming is required to explore the timeline map.

B. CAREER INFORMATION

B1. EDUCATION

1983

Master of Science in Urban and Regional Planning – University of Toronto, Programme in Planning
Residential Streetscape Livability: A Comparative Analysis of the Threshold Between Public and Private Territories
Advisors Reiner Jackson, Alan Waterhouse

1978

Certificate Urban Design, Royal Danish Academy of Art, School of Architecture
CMHC Research Fellowship Livable Eco Community Site Planning
Advisor Jan Gehl

1977

Bachelor of Landscape Architecture – University of Toronto
Solar Housing and Zero Differential Site Planning
Advisors Gerald Englar, William Rock Jr.

1985-2017

Full Member with Seal, Ontario Association of Landscape Architects (OALA)

1985-2017

Full Member Canadian Association of Landscape Architects (CSLA)

B2. EMPLOYMENT

2016 -2017 Consulting Landscape Architect - Landscape Planner - Urban Designer
2016 -2017 Professor Emeritus – Architecture, Landscape & Design– University of Toronto
2013-2016 Full Professor, Tenure – Architecture, Landscape & Design – University of Toronto
1990-2014 Associate Professor, Tenure – Architecture, Landscape & Design – University of Toronto
1989-2016 School of Graduate Studies – University of Toronto
1986-2016 DGP CSRI – KMDI cross app. (since 1990) – Department of Computer Science/CSRI - UofT
1985-1990 Assistant Professor, Tenure Stream – University of Toronto
1983-1985 Assistant Professor – University of Toronto
1981-1983 Lecturer – University of Toronto
1979-1981 Teaching Assistant – University of Toronto
1978-1984 Associate – Ross Norris Associates
1978-1979 Vice-President – Landscapes Associates Ltd., Toronto
1976 Graphics Consultant – Ecologistics Ltd.
1975 Technician/Planner – Central Lake Ontario Conservation Authority

B3. ADMINISTRATION & SERVICE

2007-2017 Co-Director – Centre for Landscape Research (CLR) – University of Toronto (UofT)
1992-2006 Director – Centre for Landscape Research (CLR) - UofT
1996-2016 Founding Member - Knowledge Media Design Institute (KMDI)– UofT
2010-2013 Associate – Cities Centre – UofT
2009 Search Committee for Knowledge Media Design Institute (KMDI) Director, UofT
2008-2009 Advisory Committee – Knowledge Media Design Institute (KMDI), UofT
2007 Acting Director – Master of Landscape Architecture Programme
2006-2008 Faculty Coordinator Research – Faculty of Architecture, Landscape & Design
2006-2008 Chair Ethics Committee – Ontario Association of Landscape Architects (OALA)
2006-2008 Research Management Committee – Canadian Design Research Network (CDRN), National Centre of Excellence
2003-2008 Steering Committee – Knowledge Media Design Institute (KMDI), UofT
2003-2008 Collaborative Program Committee – KMD-CP, School of Graduate Studies, UofT
2003-2007 Executive Committee – Faculty of Architecture, Landscape & Design, UofT
2003-2004 Promotions Committee - Faculty of Architecture, Landscape & Design
2002-2008 Councillor – Ontario Association of Landscape Architects (OALA)

2002-2005 Education Task Force – Canadian Society of Landscape Architects (CSLA)
 2002-2005 Management Committee – Integrated Centre for Visualization, Design and Manufacturing (ICVDM), University of Waterloo
 1999-2010 Tenure Review Committees and Reader - Faculty of Architecture, Landscape & Design
 1999 Advisory Board – Information Technology Design Centre (ITDC), UofT
 1998 Tenure Committee – Department of Computer Science, UofT
 1998-1999 Director – Academic Computing – Faculty of Architecture, Landscape & Design
 1995-1996 Visiting Professor – ORL Institute, ETHZ, Zurich
 1991-1992 Chairman – Bachelor of Landscape Architecture Programme, School of Architecture and Landscape Architecture, UofT
 1989-1990 NeXT Computers – 3D Color Advisory Board to Steve Jobs
 1989-1991 UofT Coordinator - Apple Design & Modelling Design Centre, UofT
 1989-1992 Acting Director – Centre for Landscape Research (CLR), UofT
 1987-1991 Chair - Canadian Association for Computers in Design Education (CACDE)
 1986-1991 Steering Committee Member - Association for Computer Aided Design In Architecture (ACADIA)

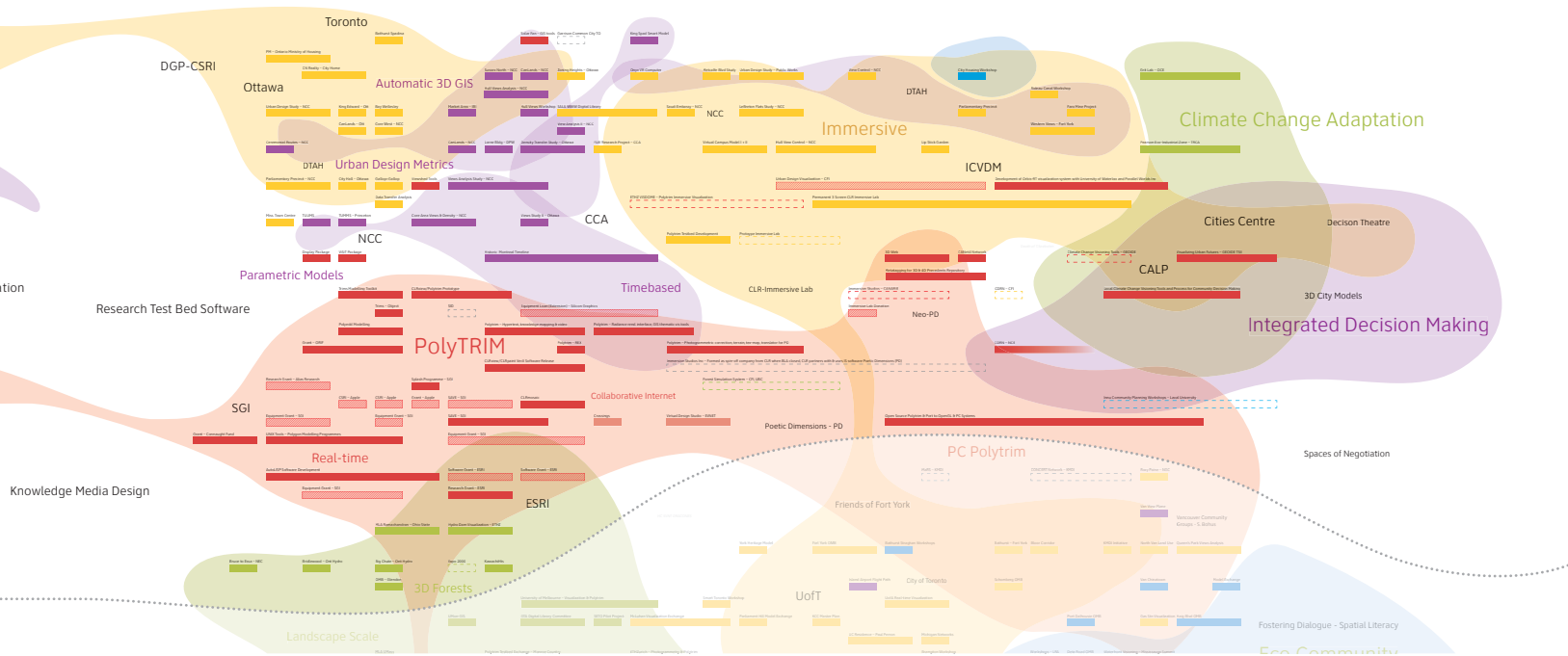
B4. AWARDS & HONOURS

2015 Canadian Society of Landscape Architects Teaching Award
 2009 Design Exchange – National Urban Design Award – Lakeview Legacy Project
 2009 Canadian Society of Landscape Architects CSLA National Merit Award – Lakeview Legacy Project
 2009 Ron Searle Community Service Award – Mississauga Lakeview Ratepayers Association
 2008 American Society of Landscape Architects – ASLA Thesis Honor Award – Graduate Thesis – Advisor to Cathrin Winkelman
 2007 American Society of landscape Architects – ASLA Thesis Honor Award – Graduate Thesis – Advisor to Van Thi Diep
 2007 Canadian Society of Landscape Architects – CSLA National Citation Award – Ottawa View Control – DTAH-CLR-National Capital Commission
 2006 American Society of landscape Architects – ASLA Thesis Honor Award – Research Thesis – Advisor to Mehran Madani
 2006 Canadian Institute of Planners – CIP National Merit Award - Block32 Rail lands – City Housing Team, DTAH
 2003 American Society of landscape Architects – ASLA Thesis Honor Award – Design Thesis – Advisor to Hengameh Joulie
 1990 Canadian Institute of Planners – CIP Award – Bathurst Spadina – Gerome Markson Architects-CLR
 1990 American Institute of Architects Awards, Citation Award – Parliamentary Precinct – National Capital Commission-DTAH-CLR
 1988 Progressive Architecture Awards, Citation Award – Parliamentary Precinct – National Capital Commission-DTAH-CLR
 1988 Canadian Society of Landscape Architects – Parliamentary Precinct – National Capital Commission-DTAH-CLR
 1986 Progressive Architecture Awards, Citation Award – Ceremonial Route – National Capital Commission-DTAH-CLR
 1977 Canada Mortgage and Housing Corporation – CMHC Research Fellowship – Livable Eco Community Site Planning

B5. PROFESSIONAL AFFILIATIONS & RESEARCH ORGANIZATIONS

1979-2017 Ontario Association of Landscape Architects (OALA)
 1983-2017 Canadian Society of Landscape Architects (CSLA)
 2006-2010 American Society of Landscape Architects (ASLA)
 1981-2017 Conference of Education in Landscape Architecture (CELA)
 2005-2006 Canadian Design Research Network (CDRN)
 1986-1993 Association for Computer Aided Design In Architecture (ACADIA)
 1986-2001 Canadian Association for Computers in Design Education (CACDE) – Founding President
 1999-2017 Knowledge Media Design Institute (KMDI), University of Toronto
 1986-1994 Member, Computer Systems Research Institute, Dynamic – Graphics Project
 2002-2007 Integrated Centre for Visualization, Design and Manufacturing (ICVDM), University of Waterloo

C. PRACTICE & RESEARCH ACTIVITIES



NOTE: PLEASE REFER TO DETAILED TIMELINE MAP BETWEEN P.4 & P.5

C1. EXTERNALLY FUNDED ACADEMIC RESEARCH & CREATIVE PROFESSIONAL PRACTICE

ROLES IN ACTIVITIES

PI = Principal Investigator

CO-PI = Co-Principle Investigator

COLL = Contributing Investigator

* Notes overall project funding – not directed to CLR

2016-2017

Glen Abbey Heritage Assessment

Client: City of Oakville // consulting to DTAH for Letourneau Heritage Consulting Inc.

THEMES: **VIEWS ANALYSIS - HERITAGE ASSESSMENT**



2013-2015

Ottawa River Study

Partners: National Capital Commission // DTAH

Funding: \$21,000 // Role: PI

THEMES: **VISUALIZATION INTEGRATED URBAN DESIGN DECISION MAKING - 3D CITY MODELLING**



2011-2013

Visualizing Urban Futures: Geomatics Decision Support for Canadian Urban Regions

Partners: GEOIDE TSII, NEPTIS // Collaborators: Cities Centre, CLR, UBC, Waterloo, Laval

Funding: \$150,000* [16] // Role: CO-I - combining geodesign and integrated models

THEMES: **INTEGRATED URBAN DESIGN DECISION MAKING - 3D CITY MODELLING - GEODESIGN**



2011-2012

Adaptation of Properties in Pearson Eco-Industrial Zone

Partners: Toronto Region Conservation Authority (TRCA), Partners in Green // Collaborators: CLR

Funding: \$20,000 [1] // Role: COLL – Linking GEOIDE findings to client sites

THEMES: **LID - CLIMATE CHANGE - VISUALIZATION**



2011-2014

LeNotre Mundus III

Partners: ERASMUS, European Union

Funding: \$2,000 approx // Role: COLL

THEMES: **KNOWLEDGE EXCHANGE** - **URBANITY** - **CLIMATE CHANGE**



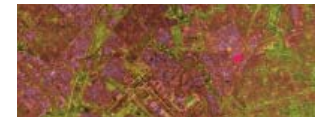
2010-2011

Low Impact Development (LID) Adaptation of Properties in Pearson Eco-Industrial Zone

Partners: Toronto Region Conservation Authority (TRCA), Partners in Green // Collaborators: CLR

Funding: \$30,000 [1] // Role: COLL – Linking GEOIDE findings to client sites

THEMES: **VISUALIZATION** - **LID** - **CLIMATE CHANGE**



2010-2012

GRIT Lab: Green Roof, Green Wall Research Laboratory – 230 College Street

Partners: Tremco, OCE, City Toronto, CLR-GRIT Lab

Funding: \$350,000 [15] // Role: COLL

THEMES: **VISUALIZATION** - **CLIMATE CHANGE** - **SOLAR ANALYSIS METRICS**



2009-2011

Public Space and Climate Change Case Studies

Partners: ERASMUS, European Union, LeNotre Mundus

Funding: \$3000 // Role: CO-I

THEMES: **KNOWLEDGE EXCHANGE** - **URBANITY** - **CLIMATE CHANGE**



2009-2012

Local Climate Change Visioning Tools and Process for Community Decision Making

Partners: GEOIDE, Full Funding Phase II, al LOI IV-032 National Centre of Excellence, UBC

Collaborators: CLR input to Toronto Urban Heat Island with the City of Toronto

Funding: \$69,000 [13] [1], Total Study-\$390,000 // Role: CO-I

THEMES: **CLIMATE CHANGE VISUALIZATION & ADAPTATION** - **GIS** - **CAD** - **3D CITY MODELLING** - **TESTING HEAT ISLAND VISUALIZATION**



2009-2013

Innu Community Planning Workshops advise on visualization for Université Laval

Partners: CURA Funding

Funding: \$999,826* [14] // Role: COLL – Advising Team

THEMES: **PARTICIPATORY VISUALIZATION** - **LANDSCAPE COMMUNITY MODELS**



2007-2009

Western Views Urban Design Analysis, City of Toronto

Partners: City of Toronto, duToit Allsopp Hillier, Fort York Precinct

Funding: \$3000 // Role: PI - Adaptation of Data and Visualization

THEMES: **3D CITY MODELLING** - **VISUALIZATION** - **VIEWS ANALYSIS**



2008

Visualization Strategy for the Faro Mine Project Expert Panel Workshop input to CALPstudy.

Partners: Yukon Government, UBC

Funding: \$1,500 [13] // Role: CO-I

THEMES: **VISUALIZATION**



2008-2009

Local Climate Change Visioning Tools and Process for Community Decision Making

– CLR input to define Toronto case study

Partners: GEOIDE, al LOI IV-032 National Centre of Excellence, UBC

Funding: \$50,000 [13], Pilot study to \$390,000 proposal // Role: CO-I

THEMES: **CLIMATE CHANGE VISUALIZATION & ADAPTATION** - **GIS** - **CAD** - **3D CITY MODELLING**



2007

Rideau Canal Urban Design Workshop

Partners: Ottawa Convention Centre

Funding: \$7,000 // Role: PI

THEMES: **VISUALIZATION**



2007-2009

LeNotre Mundus

Partners: ERASMUS, European Union // Collaborators: Richard Stiles, Austria

Urban Landscapes and Cultural Landscapes, 23 University International Network to ECLAS

Funding: \$5,000 // Role: COLL

THEMES: **KNOWLEDGE EXCHANGE**



2007-2008

CONCERT Network: Consortium on New Media, Creative, and Entertainment R&D in the Toronto Region (CONCERT)

Partners: Province of Ontario // Collaborators: KMDI – UofT, York University, OCAD, Ryerson

Funding: \$100,000 [12] // Role: COLL for KMDI

THEMES: **KNOWLEDGE MEDIA**

2006-2008

Canadian Design Research Network (CDRN) – Project Leader of Visualization Theme

Partners: National Centre of Excellence // Collaborators: Lead by SFU co-investigator

Funding: \$700,000*[11] // Role: CO-PI Visualization

THEMES: **IMMERSIVE VISUALIZATION** - **INTEGRATED URBAN DECISION MAKING** - **REAL-TIME DESIGN**

2005

City Housing Urban Design Community Workshop

Partners: City of Toronto Housing, DuToit Allsopp Hillier, Nasmith Architects

Funding: \$7,000 // Role: PI

THEMES: **IMMERSIVE VISUALIZATION** - **INTEGRATED URBAN DECISION MAKING** - **NEGOTIATION PROTHESIS**



2005

Simulation urban design testing of massing for development in the Parliamentary Precinct

Partners: DuToit Allsopp Hillier (DTAH) //

Funding: N/A // Role: PI – Modelling, visualization conducted with R. Allsopp-DTAH

THEMES: **ADAPTATION OF POLYTRIM TECHNIQUES TO COMMERCIAL SOFTWARE IN PRACTICE**



2004

Lip Stick Garden Design Testing – Montreal Convention Centre

Partners: Claude Cormier Landscape Architect

Funding: N/A // Role: PI – Modelling, visualization

THEMES: **IMMERSIVE DESIGN**



2003-05

3D Urban Space Repository Development of 3D Modles in Multiple Formats for Urbane

Partners: OSAP Workstudy Program

Funding: \$10,000 // Role: PI

THEMES: **3D WEB CONTENT** - **URBAN PRECEDENTS** - **3D SPATIAL LITERACY**

2003-04

3DWEB

Partners: Heritage Canada // Principle Investigator: University of Calgary

Funding: \$170,000 – CLR component of \$1,800,000* (10)(1) // Role: PI - on UofT component

THEMES: **3D WEB CONTENT** - **URBAN PRECEDENTS** - **3D SPATIAL LITERACY** - **POLYTRIM**



2003-2004

Urban Design Neighbourhood Workshop

Partners: Context Development

Funding: \$7,000 // Role: PI

THEMES: **PARTICIPATORY VISUALIZATION** - **3D CITY MODELLING**



2002-04

Provided assistance to Immersion Studios in the creation of a content management guide

Partners: CANARIE, Immersion Studios Inc, Immersive Content

Funding: \$400,000*[2] // Role: COLL

THEMES: **TOOL DESIGN** - **IMMERSION** - **PARTICIPATORY METHODS** - **3D CITY MODELLING**



2000-05

Urban Design Visualization

Agency: CFI // Collaborator: University of Waterloo

Funding: \$330,000 [9] – CLR component of \$5,800,000* mill. grant (9) // Role: CO-PI

THEMES: 3D CITY MODELLING - VISUALIZATION - POETIC DIMENSIONS SOFTWARE - NEO-PD SOFTWARE



2002

Donation to the AL&D Immersive Lab

Partners: Provost's Fund and J.Danahy Donation

Funding: \$35,000 plus \$35,000 match by UofT // Role: Donor

THEMES: IMMERSIVE VISUALIZATION - INTEGRATED URBAN MODELLING



2002

View Control Urban Design Documentation

Partners: National Capital Commission

Funding: \$5,000 // Role: PI

THEMES: VISUALIZATION



2001 - 2002

Fort York OMB Hearing Urban Design Visualization Assistance – Expert Witness

Partners: Friends of Fort York

Funding: \$5,000 // Role: PI

THEMES: VISUALIZATION - URBAN METRICS - NEGOTIATION PROSTHESIS - EVIDENCE OMB

2000-2002

Hull Urban Design View Control

Partners: National Capital Commission

Funding: \$19,755 // Role: PI

THEMES: VIEWS ANALYSIS - URBAN METRICS



1998-2001

UBC Immersive Visualization Forest Simulation System

Partners: CFI UBC CALP

Funding: \$300,000* // Role: COLL - Advice to CALP on 3 screen immersive lab

THEMES: IMMERSIVE VISUALIZATION - 3D CITY MODELLING



1999-2000

Urban Design Study

Partners: Public Works Canada // DTAH

Funding: \$21,000 // Role: PI

THEMES: VIEWS ANALYSIS - REAL-TIME DESIGN URBAN METRICS



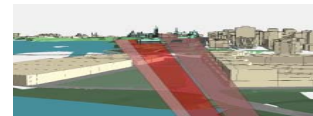
1999-2000

LeBreton Flats Study – Views Analysis and Density Study Metrics

Partners: National Capital Commission

Funding: \$23,000 // Role: PI

THEMES: VIEWS ANALYSIS - URBAN METRICS - EVIDENCE OMB



1998-1999

Campus VR Model II – State of the Art Projective Model of Campus Master Plan

Partners: University of Toronto

Funding: \$24,000 // Role: PI

THEMES: 3D CITY MODELLING



1998

Metcalfe Blvd. Design Study of Possible Future Urban Axis for Prime Minister's Office

Partners: National Capital Commission

Funding: \$14,400 // Role: PI

THEMES: VIEWS ANALYSIS



1998

Virtual Campus Model I – Establishing texture mapped realtime model

Partners: UofT Library, CAAT Lab

Funding: \$24,000 [1] // Role: PI

THEMES: - 3D CITY MODELLING - POLYTRIM



1997-1998

Virtual Design Studio

Partners: SSHRC, EVNET Centre of Excellence

Funding: \$20,000 [1] // Role: CO-I

THEMES: **VIRTUAL DESIGN STUDIO - COLLABORATION**



1997-1998

Polytrim Testbed Development

Partners: Provosts Fund

Funding: \$25,000 // Role: PI

THEMES: **POLYTRIM**

1997

Saudi Embassy UD Study

Partners: National Capital Commission

Funding: \$6,000 // Role: PI

THEMES: **VISUALIZATION - VIEWS ANALYSIS**



1996

Onyx VR Computer

Partners: McLuhan Program - Bell Canada

Funding: \$600,000 [7] // Role: CO-I

THEMES: **3D CITY MODELLING**



1994-1996

SALA WWW Digital Library

Partners: Provost's Fund

Funding: \$27,000 // Role: CO-PI

THEMES: **POLYTRIM**



1996

Frank Lloyd Wright Historical Research Project

Partners: CCA Library of Congress

Funding: \$23,000 // Role: PI

THEMES: **POLYTRIM**



1993-1996

Equipment Loan – Extension

Partners: Silicon Graphics

Funding: \$30,000 // Role: PI

THEMES: **POLYTRIM**

1994

Views Analysis Study – Zoning Heights

Partners: City of Ottawa

Funding: \$7,000 // Role: PI

THEMES: **VIEWS ANALYSIS - URBAN METRICS**



1994

Hull Views Analysis Part II

Partners: National Capital Commission

Funding: \$5,000 // Role: PI

THEMES: **URBAN METRICS**

1993-1996

Historic Montreal Timeline

Partners: Canadian Centre for Architecture

Funding: \$24,000 [2] // Role: CO-PI

THEMES: **URBAN METRICS - POLYTRIM**



1993

CanLands A Analysis

Partners: National Capital Commission

Funding: \$7,200 // Role: PI

THEMES: **URBAN METRICS**

1992-1993

Hull Views Analysis Study

Partners: National Capital Commission

Funding: \$15,000 // Role: PI

THEMES: **VIEWS ANALYSIS** - **URBAN METRICS**

1993

Workshop – Hull Views

Partners: National Capital Commission

Funding: \$7,000 // Role: PI

THEMES: **3D CITY MODELLING** - **URBAN METRICS**



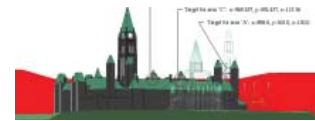
1993

Views Analysis Study – Part II

Partners: City of Ottawa

Funding: \$4,000 // Role: PI

THEMES: **VIEWS ANALYSIS** - **URBAN METRICS**



1992-1993

Historic Montreal Timeline

Partners: Canadian Centre for Architecture

Funding: \$24,000 [2] // Role: CO-PI

THEMES: **URBAN METRICS** - **POLYTRIM**



1993-1994

Density Transfer Study – Urban Design

Partners: City of Ottawa

Funding: \$18,000 // Role: PI

THEMES: **VIEWS ANALYSIS** - **URBAN METRICS** - **PARTICIPATORY VISUALIZATION**



1991-1993

Views Analysis Study

Partners: National Capital Commission

Funding: \$30,000 // Role: PI

THEMES: **VIEWS ANALYSIS** - **URBAN METRICS**



1991-1993

SAVE Scientific Analysis & Visualisation of Environment

Partners: Silicon Graphics

Funding: \$15,000 [2] // Role: PI

THEMES: **GEODESIGN**

1993-1994

Software Grant

Partners: ESRI

Funding: \$20,000 [1][2] // Role: PI

THEMES: **GEODESIGN**



1992

Sussex North Study

Partners: National Capital Commission

Funding: \$10,000 [2] // Role: PI

THEMES: **URBAN METRICS**

1992

Lorne Bldg Workshop

Partners: Department of Public Works

Funding: \$3,500 [2] // Role: PI

THEMES: **VISUALIZATION**

1991-1992

Snyderville Basin Study: Alternative Futures for the Snyderville Basin, Summit County, Utah

Partners: Utah State - Harvard GSD

Funding: \$2,000 [2] // Role: COLL

THEMES: **PARTICIPATORY VISUALIZATION** - **GEODESIGN**



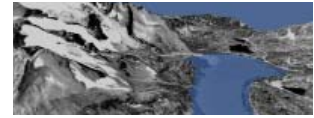
1991-92

Hydro Dam Visualization in Alps

Partners: ETH Zurich, ORL

Funding: \$10,000 [2] // Role: COLL

THEMES: **GEODESIGN**



1991-1992

Research Grant

Partners: ESRI

Funding: \$23,000 [1] // Role: PI

THEMES: **POLYTRIM**



1991-1992

Software Grant

Partners: ESRI

Funding: \$30,000 [1] // Role: PI

THEMES: **CLRVIEW** - **POLYTRIM** - **3D GIS**

**PolyTRIM
Mapping**
* Vector Map Construction/Query
* Raster Map Construction/Query/Analysis

1991

Expo 2000

Partners: City of Hannover - Harvard - U of Hannover

Funding: \$2,000 [2] // Role: COLL

THEMES: **VISUALIZATION**

1991

CanLands B UD Study

Partners: National Capital Commission

Funding: \$2,500 [2] // Role: CO-PI

THEMES: **URBAN METRICS**

1991

Market Area Urban Design Study

Partners: IBI - Sussex

Funding: \$7,500 [2] // Role: CO-PI

THEMES: **VIEWS ANALYSIS**



1991-1994

Equipment

Partners: Silicon Graphics

Funding: \$120,000 [6] // Role: PI

THEMES: **POLYTRIM**

1991-1993

Research Grant – SAVE Project – CLRview

Partners: Silicon Graphics

Funding: \$60,000 // Role: PI

THEMES: **POLYTRIM**



1990

External Research Grant

Partners: Apple Computer Inc.

Funding: \$15,000 // Role: PI

THEMES: **SOFTWARE**

1990-1991

Core Area Views & Density Study

Partners: National Capital Commission

Funding: \$101,000 // Role: PI

THEMES: **PARTICIPATORY VISUALIZATION** - **URBAN METRICS** - **POLYTRIM**



1989

CSRI Dynamic Graphics Project

Partners: Apple Computer Inc.

Funding: \$15,000 [3] // Role: PI

THEMES: **SOFTWARE**

1989

City of Toronto – City Housing Department – Bathurst Spadina

Funding: \$20,000 [1] // Role: CO-I

THEMES: 3D CITY MODELLING - URBAN METRICS



1989

Data Transfer Analysis

Partners: City of Toronto - Urban Design

Funding: \$2,500 [1] // Role: CO-PI

THEMES: VIEWS ANALYSIS - URBAN METRICS

1989

Core Area West Evaluation

Partners: National Capital Commission

Funding: \$30,000 [1] // Role: PI

THEMES: 3D CITY MODELLING - POLYTRIM



1989

Bay Wellesley

Partners: Ontario Ministry of Government Services // Funding: \$10,000 [1] // Role: CO-I

THEMES: VISUALIZATION

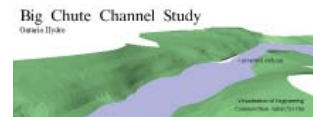
1989

Big Chute Generating Station Analysis

Partners: Ontario Hydro

Funding: \$1,200 // Role: PI

THEMES: VISUALIZATION



1989

Gallop+Gallop Sign Study with University of Guelph

Partners: Hough Stansbury Woodland // Funding: \$5,000 [4] // Role: CO-PI

THEMES: VISUALIZATION

1989

Equipment Grant

Partners: Silicon Graphics

Funding: \$75,000 // Role: PI

THEMES: SOFTWARE

1989

OMB Visual Impact Assessment

Partners: Glendon College

Funding: \$1,200 // Role: PI

THEMES: VIEWS ANALYSIS - FIRST COMPUTER EVIDENCE ACCEPTED BY OMB



1988

City Hall Competition Evaluation

Partners: City of Ottawa

Funding: \$10,000 [1] // Role: PI

THEMES: VISUALIZATION - URBAN METRICS



1988

King Edward Urban Design Study

Partners: City of Ottawa // Funding: \$5,000 // Role: PI

THEMES: VISUALIZATION

1987

Visual Impact Assessment Bridlewood

Partners: Ontario Hydro

Funding: \$10,000 // Role: SRA, PI

THEMES: VISUALIZATION



1987-1989

Rail Lands Neighbourhood

Partners: CN Realty – City Home

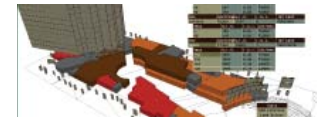
Funding: \$10,000 [1] // Role: CO-I

THEMES: 3D CITY MODELLING



1988
 CSRI Dynamic Graphics Project
 Partners: Apple Computer Inc. // Funding: \$10,000 [3] // Role: SRA, PI
 THEMES: **VISUALIZATION**

1988
 Can Lands Competition Evaluation
 Partners: City of Ottawa
 Funding: \$5,000 // Role: CO-PI
 THEMES: **URBAN METRICS**



1987-1989
 Grant
 Partners: Ontario Univ. Research and Incentive Fund // Funding: \$248,000 // Role: PI
 THEMES: **POLYTRIM**

1987-1989
 Equipment Loan
 Partners: IBM Canada // Funding: \$40,000 // Role: PI
 THEMES: **COMPUTER AIDED DESIGN**

1986-1987
 Research Grant
 Partners: Alias Research Inc.
 Funding: \$160,000 // Role: PI
 THEMES: **SOFTWARE EVALUATION**



1986-1987
 Equipment Grant
 Partners: Silicon Graphics Computer Systems // Funding: \$110,000 // Role: PI
 THEMES: **POLYED**

1986-1987
 Urban Design Study
 Partners: National Capital Commission, City of Ottawa
 Funding: \$10,000 // Role: PI
 THEMES: **VISUALIZATION - URBAN METRICS**



1986-1987
 Parliamentary Precinct
 Partners: National Capital Commission
 Funding: \$19,000 // Role: PI
 THEMES: **3D CITY MODELLING**



1985
 Bruce to Essa Analysis
 Partners: Niagara Escarpment Commission
 Funding: \$3,500 // Role: PI
 THEMES: **VISUALIZATION**



1986
 Ceremonial Routes
 Partners: National Capital Commission
 Funding: \$10,000 // Role: PI
 THEMES: **UNIX MAKE FILE PARAMETRICS**



1986
 Mississauga Town Centre
 Partners: Hammerson Canada Inc.
 Funding: \$3,500 // Role: PI
 THEMES: **3D CITY MODELLING**



1984-1985
 New Staff Grant
 Partners: Connaught Fund, University of Toronto // Funding: \$15,000 // Role: PI
 THEMES: **VISUALIZATION**

2010

Roxy Paine Sculpture Location

Partner: National Gallery of Canada // Role: CO-PI (R. Allsopp DTAH)

THEMES: **VISUALIZATION**



2010

Vancouver View Plane Visualization in Google Earth

Partner: Stephen Bohus // Role: CO-PI

THEMES: **VISUALIZATION**

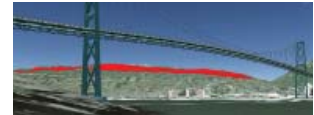


2010

North Vancouver Land Use Visualization in Google Earth

Partner: Stephen Bohus // Role: CO-PI

THEMES: **VISUALIZATION**



2010

Vancouver Chinatown Intensification Analysis

Partner: Stephen Bohus // Role: CO-PI

THEMES: **VISUALIZATION**



2008-2010

Lakeview District Plan Advisory Panel

Partner: City of Mississauga // Role: Advisory Panel Member

THEMES: **COMMUNITY PARTICIPATION**

2010

Pioneer Gas Station Visualization of Transitions

Partners: Town of Port Credit Association, MSA Architects

THEMES: **COMMUNITY PARTICIPATION** - **PARTICIPATORY VISUALIZATION**



2009-2012

Small Arms Heritage Adaptive Reuse Project

Partner: Lakeview Legacy Foundation

Role: Board Member & Proposal Planning Team Member

THEMES: **ARTS & CULTURE INCUBATOR CENTRE**



2009-2012

Mississauga Summit – Waterfront Visioning

Partner: Mississauga Summit

Role: Preparation of Waterfront Development Corporation Proposal

THEMES: **COMMUNITY PARTICIPATION** - **PARTICIPATORY VISUALIZATION**



2009

Student Projects for the Lakeview Community Retail Study

Partner: Undergraduate Retail Study, Prof J. Leyton UTM

THEMES: **COMMUNITY PARTICIPATION** - **PARTICIPATORY VISUALIZATION**



2009

Student Projects for the Lakeview Community Heritage Park Study

Partner: UTM-UofT Graduate Planning Practicum PLA1106 Heritage Park Study

THEMES: **COMMUNITY PARTICIPATION** - **PARTICIPATORY VISUALIZATION**



2009

KMDI Urban Design Theme Digital Media Initiative

Partner: Knowledge Media Design Institute, Daniels, CLR

THEMES: **3D CITY MODELLING**



2008

Deta Road OMB assistance and visualization advice by CLR to local residents evidence before the Board

Partner: Lakeview Ratepayers Association // Role: Visualization

THEMES: **COMMUNITY PARTICIPATION** - **PARTICIPATORY VISUALIZATION**



2007-2012

Lakeview Legacy Plan by CLR

Partner: Lakeview Ratepayers Association

Role: Visualization Led to resolution passed unanimously by City of Mississauga Council, now in Phase II implementation.

THEMES: [COMMUNITY PARTICIPATION](#) - [PARTICIPATORY VISUALIZATION](#) - [URBAN METRICS](#)



2007

Bloor Corridor and Queens Park

Partner: workshop for Councilor Adam Vaughan

THEMES: [COMMUNITY PARTICIPATION](#) - [PARTICIPATORY VISUALIZATION](#)



2005-2006

Lakeview Legacy Project

Partner: Lakeview Ratepayers Association // Role: PI

THEMES: [COMMUNITY PARTICIPATION](#) - [PARTICIPATORY VISUALIZATION](#) - [URBAN METRICS](#) - [POLYTRIM](#)



2006

Bathurst Bridge Elevations and Grading Visualization EA

Partners: Friends of Fort York

THEMES: [COMMUNITY PARTICIPATION](#) - [PARTICIPATORY VISUALIZATION](#)



2006

Port Credit Library on Placemaking – Visualization support of future building scenarios

Partners: Port Credit Village Community

THEMES: [COMMUNITY PARTICIPATION](#) - [PARTICIPATORY VISUALIZATION](#)

2006

Schomberg residents visualization, leading to negotiated settlement at OMB

Partner: Private Citizen

THEMES: [COMMUNITY PARTICIPATION](#) - [PARTICIPATORY VISUALIZATION](#)



2006

CDRN – CFI Proposal

Partners: CDRN network Dalhousie, NSCAD, Laval, ETS, McGill, Ryerson, OCAD, UofT, Waterloo, Manitoba, Calgary, Alberta, SFU, UBC // Funding: Not funded \$24,000,000

THEMES: [POETIC DIMENSIONS](#) - [NEOPD](#)

2006

History Space Project – CFI Proposal

Partner: Brock University, Prof. J. Bonnett & Immersion Studios Inc. // Not Funded

THEMES: [POETIC DIMENSIONS](#) - [NEOPD](#)

2003 -2011

Open Source Polytrim and Port to OpenGL and PC systems

Partner: Stephen Bohus - Zoltan Kovacs

THEMES: [POLYTRIM](#)



2003-2005

Metatagging for the development of 3D and 4D Repository of Urban Design and Landscape Architecture Precedents

Partners: NA

THEMES: [VISUALIZATION](#)



2008-2012

CLR Advising Support on Urban Design and Placemaking

Partners: Community group VIVA regarding the Port Credit District

THEMES: [COMMUNITY PARTICIPATION](#)

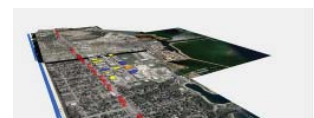


2007

CLR Placemaking Workshops

Partners: Lakeview Residents

THEMES: [COMMUNITY PARTICIPATION](#) - [URBANITY](#) - [COMPLETE STREETS](#)



2004
Peel Region Planning visualization workshop

2004
City of Brampton visualization workshop

2004
Hosting Michigan Advanced Networks visit for Vice President's Office

2004
The Medical and Related Sciences (MaRS) Discovery District – KMDI representative to Charette

2003-2004
University of Alberta – real-time visualization over networks

2005-07
Canadian Design Research Network (CDRN)
THEMES: **POLYTRIM**

2003-2006
University of Calgary – 3D Digital Repositories

2003-2006
Simon Fraser University – 3D Digital Repositories

2000-2005
University of British Columbia – Software Exchange

2003
Bathurst Straghan Immersive Decision-making workshops
Partners: City of Toronto
THEMES: **COMMUNITY PARTICIPATION** - **PARTICIPATORY VISUALIZATION** - **URBAN METRICS**



2002-2003
Visualization Assistance to UofT – Paul Perron, UC – University College Residence Project
– Kings College Circle
Partner: University of Toronto
THEMES: **PARTICIPATORY VISUALIZATION** - **URBAN METRICS**



2002
Pharmacy Building UofT Test Site Visualization

2002
Island Airport Flight Path Conflict Modelling
Partners: City of Toronto
THEMES: **VISUALIZATION**



2001-02
Fort York – Friends of Fort York – Preparation of Visualization methods and expert witness
testimony at OMB Hearing on H&R developments
Partners: Friends of Fort York
THEMES: **COMMUNITY PARTICIPATION** - **PARTICIPATORY VISUALIZATION** - **URBAN METRICS**



2001
Jokers Hill Digital Model & Terrain
Partners: University of Toronto
THEMES: **GEODESIGN**



1999
Old Town of York Hertiage District Model - Toronto
Partner: Ciizens for the Old Town
THEMES: **PARTICIPATORY VISUALIZATION**



1999

Parliament Hill Urban Model Exchange

Partner: Public Works Canada Visualization Group

THEMES: 3D CITY MODELS



1998

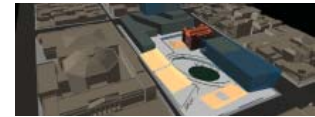
Smart Toronto – Reality 98 – Immersive virtual reality workshop one of three Uof T research projects invited.

1997-98

Virtual Design Studio Exchange

Partner: Univ. of Melbourne, Arch. - B.Dave

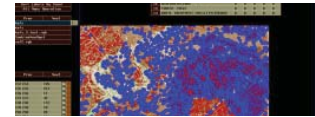
THEMES: COLLABORATIVE VIRTUAL DESIGN STUDIO



1997-2000

Further Development of Polytrim testbed software to include Photogrammetric Image correction interface, terrain modeling, texture mapping interface and translator for “Poetic Dimensions” virtual reality system (w/R. Hoinkes) Software Development & implementation by Stephen Bohus

THEMES: POLYTRIM



1996-1998

McLuhan Visualization Exchange

Partner: Kim Veltman, McLuhan Programme, UofT

1996-1998

ETHZurich -Photogrammetry. Image Rectification & Polytrim

Partner: Chair in Photogrammetry, ETHZ

THEMES: POLYTRIM



1995-1997

Further Development of Polytrim testbed software to include Radiance rendering interface, GIS thematic visualization tools. Software Devel. & implementation by S. McKenzie, R. Hoinkes
Partner: N/A

THEMES: POLYTRIM

1995-1997

University of Bath Polytrim Testbed Exchange

Partner: Architecture - Alan day

THEMES: POLYTRIM



1995

Participation in SETO Pilot Project for Provosts Advisor on Population Health, University of Toronto

1992-1994

Polytrim Testbed Exchange for use in studies of alternative futures studies

Alternatives Futures For Tennessee Valley Authority

Partners: Harvard GSD - C. Steinitz - S.Ervin

THEMES: POLYTRIM - GEODESIGN



1992-94

Polytrim Testbed Exchange for use in Studies of Alternative Futures Studies

Alternatives Futures for Monroe County, Pennsylvania

Partners: Harvard GSD - C. Steinitz - S.Ervin

THEMES: POLYTRIM - GEODESIGN



1992-1994

Polytrim Testbed Exchange for use in Studies of Alternative Futures Studies

Alternatives Futures for Utah

Partners: Harvard GSD - C. Steinitz - S.Ervin - R.Hoinkes

THEMES: POLYTRIM - GEODESIGN



1993-1994

GTA – Digital Library Committee for Provost’s Advisor on the Environment

Partners: University of Toronto

THEMES:



1992-2000

University of Melbourne, Engineering GIS Visualization & Polytrim

THEMES: **POLYTRIM**



1992-1996

Polytrim Testbed Exchange Real-time Models

Partner: ETH Zurich - Chair Arch.Comp.

THEMES: **POLYTRIM**



1992-2004

GIS Visualization & Polytrim Exchange

Partner: ETH Zurich - ORL

THEMES: **POLYTRIM** - **PARTICIPATORY VISUALIZATION**

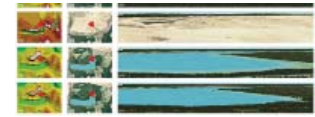


1992-2004

GIS Visualization & Polytrim Exchange

Partner: ETH Zurich - ORL

THEMES: **POLYTRIM** - **GEODESIGN**



1992-2004

GIS Visualization & Polytrim Exchange

Partner: ETH Zurich - ORL

THEMES: **POLYTRIM** - **GEODESIGN**



1992-2004

GIS Visualization & Polytrim Exchange

Partner: ETH Zurich - ORL

THEMES: **POLYTRIM** - **GEODESIGN**



1992-2004

GIS Visualization & Polytrim Exchange

Partner: ETH Zurich - ORL

THEMES: **POLYTRIM** - **GEODESIGN**



1992-1994

CLRview and CLRpaint software packages Version II released to over 800 different users ranging from NASA to Texaco to Stanford University (see attached shortlist of users)

Software Development & implementation by R. Hoinkes, & Stephen Bohus & S. McKenzie

Partners: SGI S.A.V.E. Program

THEMES: **POLYTRIM**



1992-1994

Further development of Polytrim testbed software to include Hypertext, knowledge mapping and video control functions. Software Development & implementation by R. Hoinkes, & Stephen Bohus & S. McKenzie.

THEMES: **POLYTRIM**



1991

University of Calgary, Brian Wyvill, Computer Science "V-lab" Software Integration testing

1991-1992

MIT, Harvard, Ohio State, University of Massachusetts, Capital Cities Environmental Assessment Montreal, Manitoba, Strathclyde, Zurich, & UCLA

1990-1992

CLRview/Polytrim: Prototype Multi purpose 3D viewing, modelling, GIS, image

THEMES: **POLYTRIM** - **URBAN METRICS**



1990

Viewshed Analysis and Intervisibility Option to Polytrim

THEMES: **POLYTRIM**



1990

Splash: Paint Programme for Silicon Graphics Systems

THEMES: **POLYTRIM**



1989

University of Calgary, Prof. J. Brown - Houston Highway Competition Implementation - Scoring Music in RealTime visualization

1989

University of Strathclyde, Software Exchange for Research Prototyping

1989

ETH Zurich Software Exchange for Research Prototyping

1989

Arizona State University, Software Exchange for Urban Design

1989

University of Massachusetts Joint Software Development

1989

University of Manitoba Software Exchange for Urban Design

1989

Guelph University – Software Development & Exchange

1989

TRIMS: Toolkit for Representation, Interaction Modelling & Simulation (Object Oriented)

THEMES: **TRIMS**

1988-89

Trim: Toolkit for Representation, Interaction & Modelling *

1988-89

Polyed: Specialized Polygon Modelling *

THEMES: **POLYED**

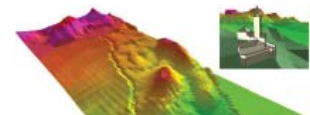
1988

Princeton University – TUMMS Demonstration Software

THEMES: **URBAN METRICS**

1988

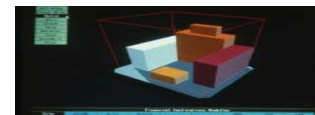
Dames & Moore Inc. – GIS Data Transfer Test



1987

TUUMS: Toronto University Urban Modelling System *

THEMES: **TUUMS** - **URBAN METRICS**



1987

Display: Real-time Wireframe Polygon Walk-through Package

THEMES: **DISPLAY**

1988

ViSiT: Real-time Shaded Surface Rendering Package

THEMES: **VISIT**

1986-89

UNIX Tools: A wide variety of Polygon Modelling and Data Translation Programmes

THEMES: **UNIX MAKEFILE TOOLS**



1986-1990

AutoLISP: Customized landscape architecture tools for planting design & terrain functions *

THEMES: **AUTOLISP CUSTOMIZATIONS OF AUTOCAD*** Software used by other research groups

Software Implemented by Staff: S. McKenzie, S Ginsberg, R. Hoinkes, & Stephen Bohus

C3. CONTRIBUTIONS TO GENERAL ACADEMIC INFRASTRUCTURE FUNDING

1997-1998

Teaching Laboratory Funding

Partners: Plan 2000 // Funding: \$200,000 [2]

1993-1995

Participant in NSERC Infrastructure Grants for CSRI

Funding: \$200,000

1989-1993

Participant in NSERC Infrastructure Grants for CSRI

Funding: \$300,000/yr

1989-1990

Coordinated Phase I of the SALA Proposals for Apple Design & Modeling Centre

Funding: \$200,000

D. PUBLICATIONS & DISSEMINATION OF RESULTS

D1. REFEREED & PROFESSIONAL ARTICLES

TYPE:

PRChap = Peer Reviewed Book Chapter

PRJourn = Peer Reviewed Journal

PRConf = Peer Reviewed Published Conference Proceedings

PRAbstr = Peer Reviewed Conference Abstract

ProfMag = Prof. Magazine

Abstr = invited Symposium

Article = Article in Book or Magazine

ROLE:

PA = Principal Author

CO-A = Co-Author

CONT-A = Contributing Author

2015

Danahy, J., Mitchell, J., Feick, R., Wright, R., & Hoinkes, R. (2015). Multi-Scale 3D Geovisualization of Urban Heat Island Data for Planning Dialogue in Toronto. Emerging Issues, Challenges, and Opportunities in Urban E-Planning, 166.

Type: PRChap // Role: PA

THEMES: LOCAL CLIMATE CHANGE - VISUALIZATION - E-PLANNING 3D URBAN MODELS - DECISION MAKING,

2014

Danahy, J., (2014). Bottom Up: Visioning Lakeview as an Eco Community: Proceedings of Urban Ecologies 2013, June 20-21, 2013. Toronto, ON. (accepted and submitted July 2014)

Type: PRConf // Role: PA

THEMES: PARTICIPATORY VISUALIZATION - URBAN METRICS

2012

Danahy, J., (2012). Lakeview: Bottom-up Visioning, Urban Ecologies 2013 Conference, OCAD University, June

Type: PRAbstr // Role: PA

THEMES: PARTICIPATORY VISUALIZATION - URBAN METRICS

2013

Danahy, J., Wright, R., Mitchell, & Feick, R. Exploring Ways to Use 3D Urban Models to Visualize Multi-scalar Climate Change Data and Mitigation Change Models for ePlanning. International Journal of E-Planning Research (IJEPR).

Type: PRJourn // Role: PA

THEMES: LOCAL CLIMATE CHANGE - VISUALIZATION - E-PLANNING 3D URBAN MODELS - DECISION MAKING,

2012

Pond, E., Schroth, O. & Sheppard, S., Feick, R., Marceau, D., Danahy, J., Burch, S., Cornish, L., Cohen, S., Pooyandeh, M., Wijesekara, N., Flanders, D., Tatebe, K., & Barron, S. (2012). Collaborative processes and geospatial tools in support of local climate change visioning and planning. In Chrisman, N., Wachowicz, M. (Ed.), The added value of scientific networking (pp. 213-250). Quebec: GEOIDE Network.

Type: PRChap // Role: CONT-A

THEMES: LOCAL CLIMATE CHANGE - VISUALIZATION - URBAN METRICS

2012

Danahy, J., (2012). Visualizing Urban Futures. GeoDesign Summit Redland California

Type: PRAbstr // Role: PA

THEMES: GEODESIGN - PARTICIPATORY VISUALIZATION - URBAN METRICS - LOCAL CLIMATE CHANGE VISIONING

2012

Danahy, J., (2012). Toronto: Transitioning Landscape Architectural Design for Urbanity to the conditions of Temporal Urbanity. European Council of Landscape Architecture Schools Conference, Sheffield, UK.

Type: PRAbstr // Role: PA

THEMES: URBANITY - SOCIAL LIFE

2009

Bohus, S., & Danahy, J., (2009). Mississauga Waterfront. The Case for Community Led Planning: Mississauga Waterfront Redevelopment Proposal. GEOWEB 2009, Vancouver.

Type: PRAbstr // Role: CO-A

THEMES: VISUAL LITERACY - PARTICIPATORY VISUALIZATION - URBAN METRICS

2009

Danahy, J., (2009). Participatory Visualization, City of Toronto, Transit City

Type: PRAbstr // Role: PA

THEMES: PARTICIPATORY VISUALIZATION - URBAN METRICS

2008

Seebohm, T., & Danahy, J., (2008). Towards constructive dialogue with real-time visualization and GIS. In Beesley, P. (Ed.) Ourtopias. Waterloo Architecture Cambridge: Riverside Architectural Press.

Type: PRChap // Role: CO-A

THEMES: IMMERSIVE VISUALIZATION - PARTICIPATORY VISUALIZATION

2008

Danahy, J., (2008). Bottom Up Visioning: The Lakeview Experience. 2008 Annual. Graduate Architecture Landscape & Design Student Union (GALDSU), Toronto. P.14 – 17.

Type: Article // Role: PA

THEMES: VISUAL LITERACY - PARTICIPATORY VISUALIZATION - URBANITY

2007

Seebohm, T., & Danahy, J., (2007). Towards constructive dialogue with real-time visualization and GIS.

Ourtopias Design Exchange Conference

Type: PRAbstr // Role: CO-A

THEMES: IMMERSIVE VISUALIZATION - PARTICIPATORY VISUALIZATION

2007

Seebohm, T., Cote, P., Danahy, J., & Rivard, H. (2007). REPORT-The changing face of practice is explored. Canadian Architect, 52(6), 41-41.

Type: ProfMag // Role: CO-A

THEMES: IMMERSIVE VISUALIZATION - PARTICIPATORY VISUALIZATION

2007

Danahy, J., & Seebohm, T. (2007). Show Me – Better Yet, Let Me See It For Myself, Idea8s the arts and Science review, University of Toronto, Autumn 2007 volume 4:number 2

Type: Article // Role: CO-A

THEMES: IMMERSIVE VISUALIZATION - PARTICIPATORY VISUALIZATION

2006

Danahy, J., & Suhanic, W. (2006). The Canadian design research network's prototype design grid. In Proceedings of the 2006 ACM/IEEE conference on Supercomputing (p. 317). ACM.

Type: PRConf // Role: CO-A

THEMES: CANET - ACCESS GRID - VIRTUAL DESIGN STUDIO - COLLABORATION - IMMERSIVE VISUALIZATION

2006

Lindquist, M., & Danahy, J. (2006). Community initiated public participation: Altering the urban design decision making process with real time immersive visualization. In Schrenk, M. (Ed.) Sustainable solutions for the information society: Proceedings of CORP 2006 & Geomultimedia06 (pp. 293-298). Vienna, Competence Centre for Urban and Regional Development (CORP).

Type: PRConf // Role: CO-A // Cited by 3

THEMES: PARTICIPATORY VISUALIZATION - IMMERSIVE VISUALIZATION

2006

Oh, J. Y., Stuerzlinger, W., & Danahy, J. (2006). Sesame: towards better 3d conceptual design systems. In Proceedings of the 6th conference on Designing Interactive systems (pp. 80-89). ACM.

Type: PRConf // Role: CO-A // Cited by 30

THEMES: SESAME MODELLER - DESIGN THINKING

2006

Allsopp, R. & Danahy, J. (2006). Virtual Conservation: Using Computer Simulation to Protect Our Heritage, Heritage, Heritage Canada Foundation, Ottawa, Summer 2006. Article and Summary Report on link.

Type: Article // Role: CO-A

THEMES: IMMERSIVE VISUALIZATION - PARTICIPATORY VISUALIZATION

2006

Danahy, J. (2006). Design Grid and CDRN research agenda. R&E Summit.

Type: Abstr // Role: PA

THEMES: COLLABORATION

2006

Seeböhm, T., & Danahy, J., (2006). CDRN Opensource initiative and methods for assessing intensification and tall building. Tall Buildings Symposium - City of Toronto Planning Department.

Type: Abstr // Role: CO-A

THEMES: **NEO-PD OPEN SOURCE** - **PARTICIPATORY VISUALIZATION**

2005

Oh, J. Y., Stuerzlinger, W., & Danahy, J. (2005). Comparing sesame and sketching on paper for conceptual 3d design. In EG Workshop on Sketch-Based Interfaces and Modeling (pp. 81-87).

Type: PRConf // Role: CO-A // Cited by 11

THEMES: **SESAME MODELLER** - **DESIGN THINKING**

2005

Mora, R. & Danahy, J. W. (2005). Mechanisms of Differentiation in a Regular Grid: the Case of Toronto. Third International Biannual Symposium on Space Syntax Research. Delft.

Type: PRConf // Role: CO-A

THEMES: **SPACE SYNTAX** - **URBANITY** - **URBAN METRICS**

2005

Danahy, J. W. (2005). Negotiating public view protection and high density in urban design. Visualization in Landscape and environmental planning–Technology and Applications. Taylor & Francis, Oxon, UK.

Type: PRChap // Role: PA // Cited by 11

THEMES: **PARTICIPATORY VISUALIZATION** - **POLYTRIM** - **DESIGN THINKING**

2004

Danahy, J.W. (2004). Dynamic Immersive Visualization. The Real and Virtual Worlds of Spatial Planning, ed. Koll-Schretzenmayr, Nussbaumer, Springer, Heidelberg. Chap. 11, pp.157-171

Type: PRChap // Role: PA // Cited by 11

THEMES: **IMMERSIVE VISUALIZATION** - **POLYTRIM**

2004

Danahy, J. W., & Hoinkes, R. (2004). Negotiating Cultural and Economic Urban Landscapes Using Immersive Media. DES ACTES, C. A. H. I. E. R. S. (2004). Arts-Netlantic.

Type: PRConf // Role: CO-A

THEMES: **PARTICIPATORY VISUALIZATION** - **IMMERSIVE VISUALIZATION**

2004

Allsopp, R. & Danahy, J. (2004). Seeing is Believing. OPPI-OALA Conference

Type: Abstr // Role: CO-A

THEMES: **IMMERSIVE VISUALIZATION** - **PARTICIPATORY VISUALIZATION**

2003

Danahy, J. W. (2003). CANARIE – Advanced Networks Symposium – UofT – ORS

Type: Abstr // Role: PA

THEMES: **IMMERSIVE VISUALIZATION** - **PARTICIPATORY VISUALIZATION**

2001

Danahy, J. W. (2001). Considerations for digital visualization of landscape. Forests and Landscapes: Linking Sustainability, Ecology, and Aesthetics, 6, 225-245.

Type: PRChap // Role: PA // Cited by 8

THEMES: **IMMERSIVE VISUALIZATION** - **POLYTRIM** - **3D CITY MODELS** - **3D LANDSCAPE MODELS**

2001

Danahy, J. W. (2001). Technology for dynamic viewing and peripheral vision in landscape visualization. Landscape and Urban Planning, 54(1), 127-138.

Type: PRJourn // Role: PA Cited by 54

THEMES: **IMMERSIVE VISUALIZATION** - **POLYTRIM**

2000

Danahy, J. (2000). Virtualising the 3D Real World (2)–Visualisation Data Needs in Urban Environmental Planning and Design. GIM International, 12-15.

Type: PRConf // Role: PA // Cited by 2

THEMES: **3D CITY MODELS** - **3D LANDSCAPE MODELS**

2000

Dave, B., & Danahy, J. (2000). Virtual study abroad and exchange studio. *Automation in Construction*, 9(1), 57-71.

Type: PRJourn // Role: CO-A // Cited by 24

THEMES: VIRTUAL DESIGN STUDIO - COLLABORATION - POLYTRIM

1999

Danahy, J., & Hoinkes, R. (1999). Praktikable Panorama-Techniken fuer die Planung Schauen, Bewegen und Verknuepfen. *Garten und Landschaft*, 109, 22-27.

Type: ProfMag // Role: CO-A

THEMES: POLYTRIM

1999

Danahy, J. (1999). Looking Around and Moving About: Beyond Still Sampling. *Design in Our Visual Landscape: a Conference on Visual Resource Management*. Monte Verita Workshop

Type: PRConf // Role: PA

THEMES: POLYTRIM

1999

Danahy, J.W. (1999). Visualization data needs in urban environmental planning and design. In Fritsch, D., & Spiller, R. (Ed.), *Photogrammetric Week 99* (pp. 351-365). Heidelberg: Wichmann. Republished Conference paper.

Type: PRChap // Role: PA // Cited by 39

THEMES: POLYTRIM - 3D CITY MODELS - 3D LANDSCAPE MODELS

1999

Danahy, J. "Visualization data needs in urban environmental planning and design." *Photogrammetric Week*. Vol. 99. 1999.

Type: PRConf // Role: PA

THEMES: POLYTRIM - 3D CITY MODELS - 3D LANDSCAPE MODELS

1998

Dave, B., & Danahy, J. (2000). Virtual study abroad and exchange studio. In *Digital Design Studios: Proceedings of ACADIA'98*, p100-115.

Type: PRConf // Role: CO-A

THEMES: VIRTUAL DESIGN STUDIO - COLLABORATION - POLYTRIM

1998

Danahy, J. (1998). Structuring Techniques to Make 3D Visualization an Efficient Tool in Planning: Scaling and Focusing the Problem, *GIS '98/RT '98 Conference Proceedings*, Toronto.

Type: PRAbstr // Role: PA

THEMES: 3D CITY MODELS - 3D LANDSCAPE MODELS

1998

Wright, R. & Danahy, J. (1998). Garrison Creek, City of Toronto: Structuring Municipal GIS for Visualization. *GIS '98/RT '98 Conference Proceedings*, Toronto.

Type: PRAbstr // Role: CO-A

THEMES: URBAN METRICS - 3D CITY MODELS - 3D LANDSCAPE MODELS

1997

Danahy, J. (1997). A set of visualization data needs in urban environmental planning & design for photogrammetric data. *Automatic extraction of man-made objects from aerial and space images (II)*, 357-366.

Type: PRChap // Role: PA // Cited by 16

THEMES: POLYTRIM - 3D CITY MODELS - 3D LANDSCAPE MODELS

1995

Danahy, J. W., & Hoinkes, R. (1995, September). Polytrim: collaborative setting for environmental design. In *Proceedings CAAD futures* (Vol. 95).

Type: PRConf // Role: CO-A // Cited by 26

THEMES: POLYTRIM - THIS PAPER IS THE DEFINITIVE TREATISE OF OUR TOOL BUILDING AGENDA - URBAN METRICS - DESIGN THINKING

1990

Danahy, J. W. (1990). Irises in a landscape: an experiment in dynamic interaction and teaching design studio. In *The electronic design studio* (pp. 363-376). McCullough, M., Mitchell, W. and Purcell, P. (eds.) MIT Press.

Type: PRChap // Role: PA // Cited by 11

THEMES: THEMES: POLYTRIM - COMPUTER AIDED DESIGN

1990

Danahy, J. W. (1990). Methods and Procedures for Utilizing Simulation Tools in Landscape Architectural Practice. *Canadian Society of Landscape Architects (C.S.L.A.), Annual Convention*, Calgary

Type: Abstr // Role: PA

THEMES: VISUALIZATION - 3D LANDSCAPE MODELS

1990

Danahy, J. W. (1990). Mirror Mirror on the Wall: Abstract Reflections & Really Fast Computers. LaBash Convention, Penn State University

Type: Abstr // Role: PA

THEMES: **VISUALIZATION**

1989

Danahy, J., Wright, R., Brown, B., MacKay, T., Seebobm, T., Perron, R., ... & Covo, D. (1989). COMPUTING AND DESIGN IN THE CANADIAN SCHOOLS OF ARCHITECTURE AND LANDSCAPE ARCHITECTURE. In ACADIA'89 proceedings: 9th annual conference of the Association for Computer Aided Design in Architecture: new ideas and directions for the 1990's (p. 227). ACADIA.

Type: PRConf // Role: PA

THEMES: **3D CITY MODELS** - **3D LANDSCAPE MODELS**

1989

Bancroft, P. J., Borkin, H., Danahy, J., Shaw, D. S., Smith, E. F., & Wade, J. W. (1989). CAAD Education in the 90's. In ACADIA'89 proceedings: 9th annual conference of the Association for Computer Aided Design in Architecture: new ideas and directions for the 1990's (p. 253). ACADIA.

Type: PRAbstr // Role: CO-A

THEMES: **DESIGN THINKING**

1989

Danahy, J. (1989). Teaching Computer Aided Design at the University of Toronto. Association of Collegiate Schools of Architecture (A.C.S.A.) Convention, ACADIA Research Symposium, Chicago.

Type: PRAbstr // Role: PA

THEMES: **COMPUTER AIDED DESIGN**

1988

Wood, T. R., Danahy, J., Radford, A. D., Oxman, R., & Dvorak, R. W. (1988). Session Introduction 73. In ACADIA'88 workshop proceedings: computing in design education, October 28-30, 1988, College of Architecture and Urban Planning, University of Michigan (p. 71). Association for Computer-Aided Design in Architecture.

Type: PRAbstr // Role: CO-A

THEMES: **COMPUTER AIDED DESIGN**

1988

Danahy, J. (1988). Engaging intuitive visual thinking in urban design modelling: a real-time hypothesis. In ACADIA Workshop Proceedings 1988 (pp. 87-97).

Type: PRConf // Role: PA // Cited by 7

THEMES: **URBAN METRICS**

1988

Danahy, J. W., & Wright, R. (1988). Exploring design through 3-dimensional simulations. Landscape Architecture, 78(4), 64-71.

Type: ProfMag // Role: CO-A // Cited by 25

THEMES: **COMPUTER AIDED DESIGN**

1988

Danahy, J. W. (1988). Intuition and Computer Visualization in an Urban Design Studio Setting. Proceedings of the Fourth International Conference on Systems Research Informatics and Cybernetics, Baden Baden, West Germany.

Type: PRABstr // Role: PA

THEMES: **COMPUTER AIDED DESIGN**

1988

Danahy, J. W. (1988). Computer Graphics as a Support to Visual Thinking in Design. Princeton University, Symposium on Visualization in Scientific Computing, for May 88

Type: PRAbstr // Role: PA

THEMES: **COMPUTER AIDED DESIGN**

1987

Danahy, J. W. (1987). The Parliamentary Precinct Study: Visual Simulation in Urban Design Decision-Making. Proceedings of the GIS '87 American Society of Photogrammetry, San Francisco (Vol. 3, p. 63).

Type: PRConf // Role: PA

THEMES: **URBAN METRICS** - **LANDSCAPE VISUALIZATION**

1987

Danahy, J. W. (1987, May). Sophisticated image rendering in environmental design review. In ACM SIGCHI Bulletin (Vol. 17, No. SI, pp. 211-218). ACM.

Type: PRJourn // Role: PA

THEMES: **COMPUTER AIDED DESIGN**

1987

Danahy, J. (1987). Experiences in the Use of Sophisticated Computer Graphics in Landscape Architecture. American Society of Landscape Architects Annual Meeting,
Type: Abstr // Role: PA

THEMES: **LANDSCAPE VISUALIZATION**

1987

Danahy, J. (1987). Computer Displays in Architecture. University of Waterloo, Cooperative on Information Technology.
Type: Abstr // Role: PA

THEMES: **VISUALIZATION**

1985

Rock, W., & Danahy, J. (1985). Participatory Aesthetics: Dimensions of Territorial Control and Their Importance in the Encouragement of Creative Participation in Outdoor Space. Environmental Design Research Association - EDRA'85, NY.

Type: PRAbstr // Role: CO-A

THEMES: **URBANITY**

1984

Danahy, J. (1984). Adaptive Behaviour in Frontyards of Residential Streetscapes. Environmental Design Research Association - EDRA'84, San Louis Obispo, CA.

Type: PRConf // Role: PA

THEMES: **URBANITY**

1984

Danahy, J. (1984). Computer Aided Design Graphics and Design Process. Council of Educators in Landscape Architecture - CELA'84
Type: PRConf // Role: PA

THEMES: **COMPUTER AIDED DESIGN**

D2. DIGITAL MEDIA (CLRNET WORLD WIDE WEB – CERN)

1992-2000

Landscape Architecture CLRnet World-Wide Web Virtual Library by R Hoinkes
- over 1 million accesses per month- First Internet source for Landscape Architecture
Partners: CERN // Role: Director - Implemented by R. Hoinkes

THEMES: **WWW VIRTUAL LIBRARY**



1992-2000

Architecture CLRnet World-Wide Web Virtual Library by R Hoinkes - over 1 million accesses - per month- First Internet source for Architecture
Partners: CERN // Role: Director - Implemented by R. Hoinkes

THEMES: **WWW VIRTUAL LIBRARY**



1994

CLR hosting of the WWW home page for ACADIA and provided assistance to the international CAAD Futures Organization.

Partners: ACADIA

THEMES: **WWW VIRTUAL LIBRARY**

D3. EXHIBITIONS, VIDEO & SLIDE MEDIA

2009

Design Exchange National Awards Exhibition – Lakeview Legacy project
DX Dec. 2009-Feb.2010

Partners: Design Exchange - Lakeview Ratepayers

THEMES: **PARTICIPATORY VISUALIZATION**



2008

AL&D Faculty Works Exhibition

Eric Arthur Gallery

Partners: AL&D-CLR

THEMES: **VISUALIZATION**



1995-1997

Gordon Strong Automobile Objective, Sugarloaf Mtn. MD, 1924-25 - Video Reconstruction

Frank Lloyd Wright: Designs for an American Landscape Toured CCA, Library of Congress, Dallas Museum of Modern Art

Partners: CCA - Canadian Centre for Architecture, Library of Congress & The Frank Lloyd Wright Foundation // Role: CO-PI responsible for Digital Exhibition

THEMES: **VISUALIZING UNBUILT WORKS**



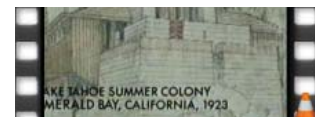
1995-1997

Lake Tahoe Summer Colony, Emerald Bay, CA. 1923 - Video Reconstruction

Frank Lloyd Wright: Designs for an American Landscape Toured CCA, Library of Congress, Dallas Museum of Modern Art

Partners: CCA - Canadian Centre for Architecture, Library of Congress & The Frank Lloyd Wright Foundation // Role: CO-PI responsible for Digital Exhibition

THEMES: **VISUALIZING UNBUILT WORKS**



1995-1997

A.M.Johnson Desert Compound, Grapevine Canyon, CA 1924 - Video Reconstruction

Frank Lloyd Wright: Designs for an American Landscape Toured CCA, Library of Congress, Dallas Museum of Modern Art

Partners: CCA - Canadian Centre for Architecture, Library of Congress & The Frank Lloyd Wright Foundation // Role: CO-PI responsible for Digital Exhibition

THEMES: **VISUALIZING UNBUILT WORKS**



1992-1993

CCA – Canadian Centre for Architecture – Opening the Gates: Video A- Evolution of Urban Form & Land Use in Old Montreal, – Collaborative research project with CCA as part of 350th anniversary exhibition of founding of Montreal [2]. Curators – Phyllis Lambert & Allan Stewart.

Partners: CCA

THEMES: **TIMELINE VISUALIZATION - GIS - POLYTRIM**



1992-1993

CCA – Canadian Centre for Architecture – Opening the Gates: Exhibit B-

- Interactive Realtime Knowledge Display Exhibit – Collaborative research project with CCA as part of 350th anniversary exhibition of founding of Montreal [2]. Curators – Phyllis Lambert & Allan Stewart.

Partners: CCA

THEMES: **URBAN METRICS - GIS -PARTICIPATORY VISUALIZATION - POLYTRIM**



1989

CCA – Canadian Centre for Architecture , Architecture and Its Image - work on inaugural exhibit on computers and architectural representation for exhibition curator. Also published in - Architecture and Its Image by Blau and Kaufman, 1989.

Partners: CCA

THEMES: **VISUALIZATION**



1987

The Dynamic Image – A Retrospective of Twenty Years of Computer Graphics at the University of Toronto – one of eight major projects, Koffler Centre, Curator – Prof. R. Baecker, Computer Systems Research Institute Also produced as a Video Tape The Dynamic Image by Prof. R. Baecker, 1989

Partners: DGP - CSRI

THEMES: **VISUALIZATION**

1986

Niagara Escarpment Visual Impact Assessment - Association for Computing Machinery
SIGGRAPH Slide Set

Partners: Niagara Escarpment Commission

THEMES: **VISUALIZATION**



D4. REVIEWER & REFEREE

2012-14 Reviewer for Landscape and Urban Planning Journal, Elsevier

2011 CELA Conference (Council of Educators in Landscape Architecture)

2011-2012 ECLAS Conference (European Council of Landscape Architecture Schools)

2012 Reviewer, Landscape Journal

2009-2012 Lakeview Advisory Panel – City of Mississauga

2005-2012 International Advisory Board of the Disp Journal, NSL – ETH Zurich

2010-2012 Steering Committee, GROUND Quarterly, OALA journal

2006-2010 Reviewer for Landscape and Urban Planning Journal, Elsevier

2007 Scientific Committee, ASCAAD 2007 – Third International Conference of The Arab Society for Computer Aided Architectural Design

2005 Scientific Committee, ASCAAD 2006 – Second International Conference of The Arab Society for Computer Aided Architectural Design

2006 CSLA Accreditation Visiting Team – University of Guelph, MLA

2004 Reviewer for Landscape and Urban Planning Journal, Elsevier

2004 Reviewer for Our Shared Landscape Ascona – ETH Zurich

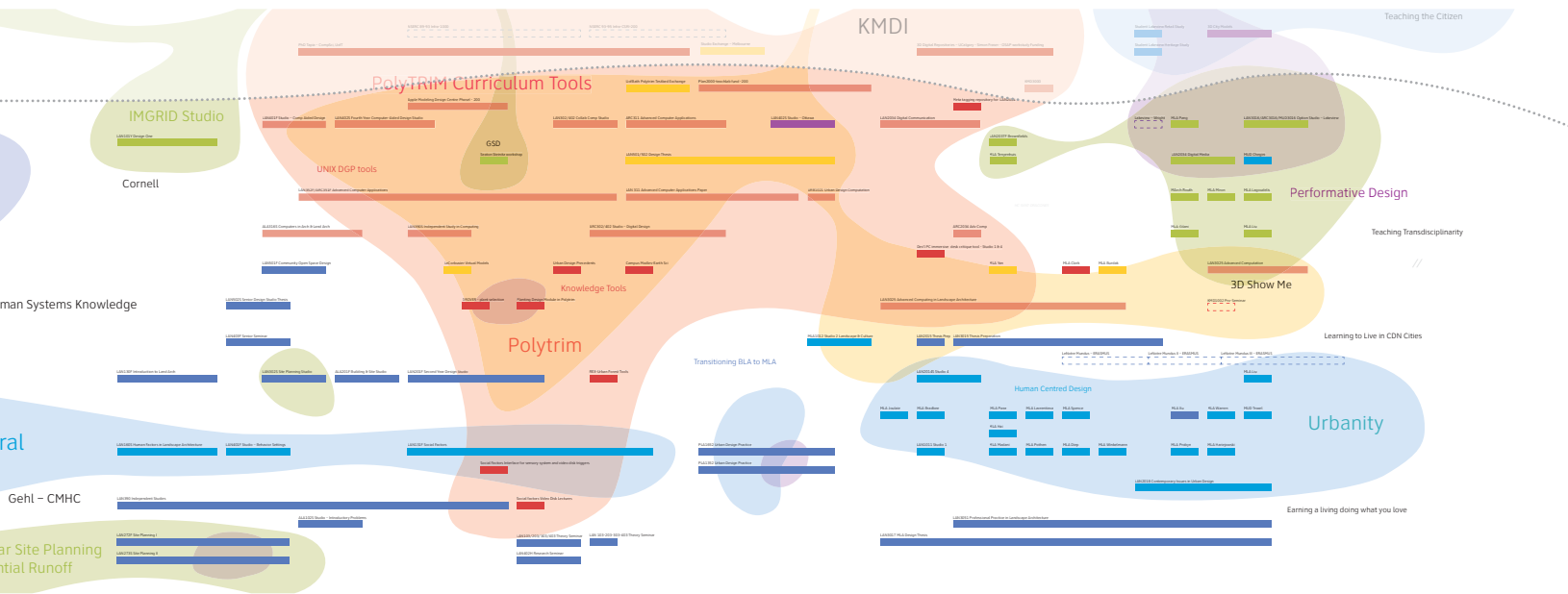
2003 Reviewer for JEM Journal, Elsevier

E. PRESENTATIONS & SPECIAL LECTURES

JAN 2012 Lakeview Legacy Project - Lakeshore Planning Council
SEPT 2011 CCE – AGO – Lecture on Lakeview Legacy Process
JUNE 2011 Centre for City Ecology – Lecture on Community Participation
DEC 2009 LeNotre Network graduate course in participation
SEPT 2009 UTM Geography, Undergraduate Planning
SEPT 2009 City of Mississauga
JUL 2009 Mississauga Rotary Club
NOV 2009 KMDI at 13
MAY 2009 Janes Walk: Mississauga
JAN 2008 Lakeview Legacy Urban Design Plan - Mississauga City
DEC 2007 Jiangsu Province City Planning Training Delegation
MAY 2007 Placemaking – Port Credit Library
MAR 2007 Design systems and knowledge media for CCT-Sheridan/UTM
JAN 2007 Visualization in Heritage Planning, Ontario Heritage Board
JUNE 2006 CDRN Research - Community College Department Heads
JUNE 2006 Virtual Design Review, Wellington New Zealand
MAY 2006 Computing Projects at Harvard, GSD
APR 2006 Reviewer - Engineering Sustainable Design Projects
MAY 2005 Urban Visualization - UofT Transportation Engineering
NOV 2003-06 Immersive Visualization and Design in KMD 1001H
MAY 2005 Analyzing Visualizations – Lecture to OMB Hearing Officers
DEC 2003 CANARIE – Advanced Networks Symposium – UofT ORS
FEB 2003 KMDI Collaborative Program, UofT
FEB 2003 University of Oklahoma, Virtual Lecture
OCT 2002 KMDI Collaborative Program, UofT
APR 2002 Harvard Design School, Advanced Computing Virtual Lecture
JULY 2000 Landscape Architecture, ETH Zurich
FEB 1999 Peter Wall Institute, University of British Columbia
AUG 1999 Our Visual Landscape, ETH Monte Verita Workshop
SEPT 1999 Photogrammetric Week 99, Stuttgart
SEPT 1999 Seminar – VISDOME – CAAD Chair ETH
MAR 1998 Computer Science, User Interface Design – Guest Lecture
MAR 1998 RTGIS98, Toronto
OCT 1997 Visualization 97, St. Louis
MAY 1997 Ascona Workshop, Swiss Federal Institute of Technology
OCT 1996 Knowledge Media Design Institute, UofT, Lecture Series
JUNE 1996 Rapperswill, CH, Workshop
MAY 1996 Guest Professor Swiss Federal Institute of Technology
OCT 1995 Guest Professor Swiss Federal Institute of Technology
SEPT 1995 Council of Educators in Landscape Arch., Telepresence Lecture
MAY 1995 Swiss Federal Institute of Technology, Architecture Chair, Lecture Series
OCT 1995 MIT Architecture
JAN 1995 Harvard GSD: Landscape Architecture – Guest Critic
NOV 1994 Provosts Advisor on Population Health, UofT, Lecture Series
OCT 1994 University of Montreal, Carleton, Laval – Digital Design Review Critic
JAN 1994 Harvard GSD: Landscape Architecture – Guest Critic
NOV 1993 Institute for Environmental Studies, UofT, Lecture Series
OCT 1993 MIT, Department of Architecture
MAY 1993 ERSI Users Conference
MAY 1993 SGI Expo
APR 1993 ETH Zurich: Architecture
APR 1993 ETH Zurich: ORL
APR 1993 Toronto Siggraph
NOV 1992 ASLA Convention
AUG 1992 Simon Fraser Univ. Comp. Sci.
MAR 1992 Canadian Science Writers Association, ROM Planetarium
DEC 1991 Harvard GSD: Landscape Architecture Graduate Studio Critic
DEC 1990 Governing Council, University of Toronto, Research Update on CLR
NOV 1990 MIT, Department of Planning Graduate Seminar
NOV 1990 Harvard GSD: Landscape Architecture Graduate Seminar
JAN 1990 Ohio State University, Depart. of Land. Arch., Teaching & Research in CAD
DEC 1989 U.C.L.A., Department of Architecture, Research Seminar
DEC 1989 University of Toronto, Planning Programme – Guest Critic

NOV 1989 University of Manitoba, Depart. of Landscape Architecture, Design Simulation
 NOV 1989 University of Toronto, Department of Geography, Visual Impact Assessment
 SEPT 1989 Royal Danish Academy of Art, Architecture School, Representing Socio-Behavioural Information
 with Computer-Aided Design systems
 SEPT 1989 University of Strathclyde, Research Seminar
 JAN 1989 University of Guelph, Graduate Seminar
 NOV 1988 University of Toronto, Planning Programme – Guest Critic
 NOV 1988 University of Toronto, Senior Alumni Lecture Series, Helping the Layperson See Designs
 MAR 1988 U.B.C., Landscape Architecture, Computer Graphics for Visual Impact Assessment
 MAR 1988 University of Calgary, Department of Planning, Workshop in Urban Design
 APR 1987 Harvard University, Graduate School of Design, Advanced Computer Graphics for Urban Design
 APR 1987 University of Mass., Land. Arch., Advanced Computer Graphics for Urban Design
 OCT 1987 Royal Danish Academy of Art, Architecture School, Lectures on Streetscape Livability and Computers in Design Visualization
 NOV 1987 Silicon Graphics Inc, Mountainview C.A., A Visual Spreadsheet
 NOV 1987 University of Toronto, Department of Geography, Visual Impact Assessment
 NOV 1987 ACADIA Conference, University of North Carolina, Raleigh N.C., A Visual Spreadsheet
 OCT 1986 University of Toronto, Department of Geography, Visual Impact Assessment
 NOV 1986 Ontario College of Art, Lecture on Advanced Computer Graphics for Urban Design
 MAR 1986 The Electronic Studio Conference, Toronto, Creative Use of Computer Graphics in Design Decision-Making, 1986
 FEB 1986 University of Calgary, Lecturing in Block-Week course on Computer Aided-Design
 FEB 1986 UNIX '86 Conference, Toronto, Computer-Generated Imagery for Urban Design and Landscape Planning
 NOV 1985 University of Toronto, Department of Computer Science, Specifications for Computer-Aided Design Systems
 NOV 1985 ACADIA Workshop '85, Arizona State University. Image Rendering Tools for the Design Studio
 OCT 1985 Ontario CAD/CAM Centre, Cambridge, Ont. lecture on Architectural Applications of CAD & University Research
 MAR 1985 Harvard University, Graduate School of Design, Computer Graphics Lab,
 Lecture on Realistic Image Synthesis for Urban Design Modeling
 FEB 1985 University of Pennsylvania, Graduate School of Fine Arts, Lecture on Realistic Image Synthesis or Urban Design Modelling
 FEB 1985 Cornell University, Department of Landscape Architecture, Lecture on Realistic Image Synthesis for Urban Design Modelling
 JAN 1985 University of Waterloo, School of Architecture, lecture on Realistic Image Synthesis for Urban Design Modelling
 FEB 1985 University of Guelph, School of Landscape Architecture, lecture on Realistic Image Synthesis for Landscape Architecture
 and Land Planning
 DEC 1984 Université de Montréal, Faculté d'Amenagement, Ecole d'Architecture de Paysage, Visiting Critic
 MAR 1984 Concordia University, Division of Building Science, Presentation on Computer-Aided Design's Influence on the Design Process

F. GRADUATE STUDENT THESIS SUPERVISION



NOTE: PLEASE REFER TO DETAILED TIMELINE MAP BETWEEN P.4 & P.5

F1. GRADUATE THESIS SUPERVISION

2013

M.L.A., Lulu Yu, Chongzhou Industrial Heritage

Role: Primary Advisor

THEMES: **URBANITY** - **BROWNFIELD REDEVELOPMENT**



2013

M.L.A., Pheonix Chan, Water City

Role: Primary Advisor

THEMES: **URBANITY** - **HYDROLOGIC INFRASTRUCTURE**



2013

M.U.D., Hongwei Zhang, Lakeview Eco Community

Role: Primary Advisor

THEMES: **URBANITY** - **ECO-COMMUNITY**



2013

M.L.A., Ding Ding, Recovering Habitat

Role: Secondary Advisor

THEMES: **ECOLOGICAL DESIGN** - **HYDROLOGIC INFRASTRUCTURE**



2013

M.L.A., Amireza Firouzi, Lakefill Habitat Infrastructure, Lakeview

Role: Primary Advisor

THEMES: **ECOLOGICAL DESIGN**



2013

M.L.A., Mengjie Han, Tower Renewal - Toronto

Role: Primary Advisor

THEMES: **URBANITY**



2013

M.L.A., Pieting Huang, Laneway Public Realm Toronto

Role: Primary Advisor

THEMES: **URBANITY**

2012

M.U.D. Noel Troxel, Improving Everyday Pedestrian Experience through Public Art Policies

Role: Primary Advisor

THEMES: **PUBLIC ART**



2012

M.U.D., Shahrooz Chegini, Walkable Communities: Lakeview Housing

Role: Primary Advisor

THEMES: **WALKABILITY - URBANITY**



2012

M.L.A., Mo Liu, Venice Lagoon: Mitigation Strategies

Role: Primary Advisor

THEMES: - **ECOLOGICAL DESIGN**



2012

M.L.A., Xin Liu, Flushing New York: Mobility & Chinatown

Role: Primary Advisor

THEMES: **URBANITY**



2012

M.L.A., Alexandros Lagoudelis, Greenroof Strategies: UofT Campus

Role: Primary Advisor

THEMES: **GREEN ROOF**



2011

M.L.A. Justin Miron, 5 Degrees: Performance Design of Prairie/Savannah as Climate Change Adaptation in Ontario's Cottage Country

Role: Primary Advisor

THEMES: - **GEODESIGN**



2011

M.L.A. Marc Hardiejowski, Conduits, Interface, & Dimensions: Intensification of Kensington Market, Toronto

Role: Primary Advisor

THEMES: **URBANITY**



2011

M.L.A. Greg Warren, Shifting the Transportation Paradigm from Systems to People: Designing the Waterloo LRT

Role: Primary Advisor

THEMES: **TRANSPORTATION - URBANITY**



2010

M.Arch. Simon Routh, Climate Change Simulation and Community Design in Tuktoyaktuk

Role: Primary Advisor

THEMES: **PARTICIPATORY VISUALIZATION - GEODESIGN - GRASSHOPPER SCRIPTING**



2010

M.L.A. Shadi Edarehchi Gilani, Desert Paradox: Arid Climate Water Management

Role: Primary Advisor

THEMES: **CLIMATE CHANGE ADAPTATION**



2010

M.L.A. Wei Pang, Transforming with Water: Serson Creek Water System Management Strategies

Role: Primary Advisor

THEMES: **HYDROLOGY INFRASTRUCTURE DESIGN**

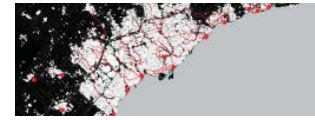


2010

M.L.A. Maxwell Probyn, Contemplating Sewage: Ashbridges Bay Constructed Wetlands and Marsh System

Role: Primary Advisor

THEMES: **INFRASTRUCTURE DESIGN**



2010

M.L.A. Li Xu, Adaptive Reuse of Chinese Quarries for Recreation and Tourism

Role: Primary Advisor

THEMES: **QUARRY REVITALIZATION**

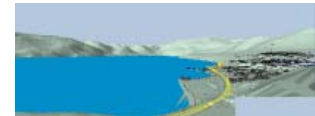


2008

M.L.A., Maria Burdak, Sea to Sky Highway, UofT

Role: Primary Advisor

THEMES: **VISUALIZATION**



2008

M.L.A., Cathrin Winkelmann, Nathan Philips Square, UofT

ASLA – American Society of Landscape Architects Analysis and Planning Honor Award

Role: Primary Advisor

THEMES: **HUMAN CENTRED DESIGN - URBANITY - DESIGN FOR HOMELESSNESS**



2007

M.L.A., Van Thi Diep, Event Landscape, Halifax, UofT

ASLA – American Society of Landscape Architects Analysis and Planning Honor Award

Role: Primary Advisor

THEMES: **URBANITY**



2007

M.L.A. Gabriel Spence, Water City, Antwerp, UofT

Role: Primary Advisor

THEMES: **URBANITY**



2007

M.L.A. Marjorie Clark, eLandscapes, Yonge Corridor, UofT

Role: Primary Advisor

THEMES: **PARTICIPATORY VISUALIZATION - GOOGLE EARTH**



2006

Ph.D. Ji-Young Oh, Desktop 3D Conceptual Design Systems, Computer Science – YorkU

Role: Secondary Advisor

THEMES: **SESAME MODELLER**



2006

M.L.A. Svetlana Lavrentieva, Post Communist Public Space, St. Petersburg, UofT

Role: Primary Advisor

THEMES: **URBANITY**

2006

M.L.A. Phil Pothén, Discourse Ecologies: Civic Discourse as a Program of Public Transit infrastructure, UofT

Role: Primary Advisor

THEMES: **HUMAN CENTRED DESIGN - URBANITY**

2005

M.L.A. Mehran Madani, West Don Lands Public Realm Plan for the Eldery, UofT

ASLA – American Society of Landscape Architects Research Honor Award

Role: Primary Advisor

THEMES: **HUMAN CENTRED DESIGN - DESIGN FOR THE ELDERLY**



2005

M.L.A. Bo Hai, Ethnicity and Urbanity: Portlands Picnic Pier, UofT

Role: Primary Advisor

THEMES: **URBANITY**

2005

M.L.A. Gerardo Paez, Conurbation and Interstice: Mexico, UofT

Role: Primary Advisor

THEMES: **HUMAN CENTRED DESIGN - URBANITY**

2005

M.L.A. Andrew Tenyenhuis, Side_40: Ecologically Sustainable Development, UofT

Role: Primary Advisor

THEMES: **ECO DESIGN**

2005

M.L.A. Xiqing Yan, Virtual Landscape and the Interpretation of Multiple Histories, UofT

Role: Primary Advisor

THEMES: **VISUALIZATION**

2004

M.L.A. Michael Cullen, Public Realm Void Interface, UofT

Role: Primary Advisor

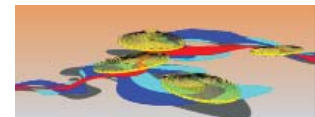
THEMES: **URBANITY**

2003

M.L.A. Cheryl Bradbee, Parking: Thirdspace, UofT

Advisors: R Wright & J. Danahy

THEMES: **3RD SPACE THEORY - URBANITY**



2002

M.L.A. H. Joulaie, Grounds for Play, UofT

ASLA – American Society of Landscape Architects First Place Graduate Design Thesis

Role: Primary Advisor

THEMES: **HUMAN CENTRED DESIGN - DESIGN FOR PLAY - IMMERSIVE VISUALIZATION**



1998-2000

M.Sc. in Computer Science, Richard Brath, Data Visualization UofT

Role: Primary Advisor

THEMES: **DATA VISUALIZATION**



1994-1997

Hoinkes, R. M., Visualizing Design Processes for Knowledge Mapping, Doctor of Design, GSD, Harvard University

Primary Advisor: Carl Steinitz // Secondary Advisor: John Danahy

THEMES: **KNOWLEDGE MAPPING**

1986-1996

Ph.D. in Computer Science, University of Toronto, Mark Tapia, From Shape to Style: Shape Grammars, Issues in Representation and Computation, Presentation and Selection.

Primary Advisor: Bill Buxton // Secondary Advisors: John Danahy, Ron Baecker, George Stiny



THEMES: **SHAPE GRAMMARS**

1989-1990

M.Sc. in Computer Science, University of Toronto, Mike Papper, Using High Level Constraints to Aid Space Planning Applications

in Computer-Aided Design

Advisors: John Danahy & Ron Baecker

THEMES: **CONSTRAINT MODELLING**



1989-1990

M.L.A. at Ohio State University. Girish Ramachandran. An Experiment in Integrating 3D Modeling and Visual Simulation Techniques with GIS Pilot Study:

The Ohio State University Master Plan

Advisors: Douglas Way, John Danahy, Dana Tomlin, & Skip Van Wyk

THEMES: **VISUALIZATION**



1989-1990

M.L.A. at University of Massachusetts (Advisor Prof. Mark Lindhult)

THEMES:

F2. GRADUATE COURSES

Responsible for the design of all courses listed.

2012-13

LAN3016/ARC3016/MUD3016: Option Studio: Lakeview Eco Community

Role: Design of Syllabus & Delivery with Ted Kesik

THEMES:- **URBANITY** - **ECO COMMUNITY** - **ECODESIGN** - **INTEGRATED URBAN METRIC**



2011-2013

LAN3025: Advanced Computation in Landscape Architecture

Role: Design of Syllabus & Delivery

THEMES:- **GEODESIGN**

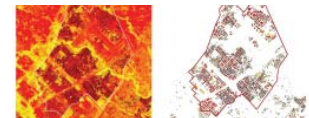


2010 & 2013

LAN2034: Landscape Architecture and Digital Media

Role: Design of Syllabus & Delivery

THEMES:- **GEODESIGN** - **CLIMATE CHANGE ADAPTATION** - **URBAN AGRICULTURE**



2011

KMD1002: Pro-seminar Knowledge Media Design

Role: Instructor of Record - Mentor

THEMES: **MEDIA DESIGN**

2002-2012

M.L.A. Design Thesis

Role: Secondary Advisor

THEMES: **ECO COMMUNITY**



2009-2012

LAN2018: Contemporary Issues in Urban Design

Role: Design of Syllabus & Delivery

THEMES: **HUMAN CENTRED DESIGN** - **URBANITY**



2004-2009

LAN3015: Thesis Preparation

Role: Co-Design of Syllabus & Delivery with R. Wright

THEMES: **THESIS RESEARCH**

2004-2012

LAN3051: Professional Practice in Landscape Architecture

Role: Design of Syllabus & Delivery

THEMES:

Final Invoice and Profit Analysis		
Total fees to be collected		\$91,111.15
Total fees collected to date		\$53,058.65
Outstanding Fees		\$38,052.50
Hours worked		343
Pay per hour to date		\$108.53
Pay per hour with outstanding fees		\$108.40

2006

KMD3000: Donna Vakalis, Sonic Assistive Technology for Designers Using Computer-Assisted Modelling Software published in 9th ERCIM Workshop "User Interfaces for All"

Role: Advisor

THEMES: **SONIC PROTOTYPE**

2005

LAN 2037F: Selected Topics in Landscape Architectural Technology + Ecology – Northern Brownfields Research

Role: Co-Design of Syllabus & Delivery with R. Wright

THEMES: - **BROWNFIELD REGENERATION**

2004

ARC2034: Advanced Computer Applications

Role: Design of Syllabus & Delivery

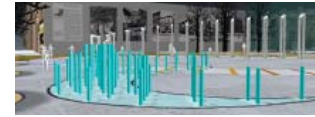
THEMES:

2003

LAN 1011: Studio 1 – Time, Space & Process

Role: Design of Syllabus & Delivery

THEMES: [HUMAN CENTRED DESIGN - URBANITY](#)



2003-2004

LAN 2014S: Studio 4 – The Social Authority – Urban Design

Student project “Urbadex” from Studio 4 Social Authority exhibited at LAONE – Toronto May 2004

Role: Design of Syllabus & Delivery

THEMES: [HUMAN CENTRED DESIGN - URBANITY](#)



2003

LAN 2015H: Thesis Preparation

Role: Design of Syllabus & Delivery

THEMES:

2002-2008

LAN 3025H: Advanced Computing in Landscape Architecture

Role: Design of Syllabus & Delivery

THEMES:



2002-2004

LAN 2034H: Landscape Architecture and Digital Communication

Role: Design of Syllabus & Delivery

THEMES:

2000

URB1021: Urban Design Computation

Role: Design of Syllabus & Delivery

THEMES:

2000-2001

MLA 1012S: Design Studio 2 – Landscape and Culture

Role: Design of Syllabus & Delivery

THEMES: [URBANITY](#)



1997-2000

PLA 1652: Urban Design Practice

Role: Design of Syllabus & Delivery

THEMES: [HUMAN CENTRED DESIGN - URBANITY](#)

1997-2000

PLA 1352: Urban Design Practice

Role: Design of Syllabus & Delivery

THEMES: [HUMAN CENTRED DESIGN - URBANITY](#)

F3. UNDERGRADUATE COURSES

1995-2000

LAN 501F/502S: Thesis Studio

Studio Advisor to multiple BLA design thesis projects. (Approx. 200)

Role: Advisor, Co-Coordinator with R. Wright

THEMES: [THESIS SUPERVISION](#)



1999-2000

LAN 402S: Option Studio – Urban Design Ottawa

Integrated the Ottawa data sets and approaches in a studio with Robert Allsopp that pioneered the first application of 3 screen immersive technology using the new generation of personal computers instead of flight simulators or heavy installed labs.

THEMES: [IMMERSIVE VISUALIZATION](#)



1995-1999

LAN 311: Advanced Computer Applications

Polytrim was the key tool used.

Role: Design of Syllabus & Delivery

THEMES: **VISUALIZATION**



1995-1997

ARC 311: Advanced Computer Applications Paper

Role: Design of Syllabus & Delivery

THEMES: **VIRTUAL DESIGN STUDIO - COLLABORATION**

1994-1995

ARC 302S/402S: Option Studio Digital Design – Urban Space

Pioneered collaborative distance studio teaching (see ACADIA)

THEMES: **VIRTUAL DESIGN STUDIO - COLLABORATION - VISUALIZATION**

1993-1994

LAN 302S / LAN 402S: Collaborative Computing Studio

Role: Design of Syllabus & Delivery

THEMES: **VIRTUAL DESIGN STUDIO - COLLABORATION**

1989-1995

LAN 131F: Social Factors

Role: Design of Syllabus & Delivery

THEMES: **HUMAN CENTRED DESIGN - URBANITY**



1992-1993

LAN 103 / 203 / 303 / 403: Theory Seminar

Role: Design of Syllabus & Delivery

THEMES: **THEORY**

1992-1993

LAN 402H: Research Seminar

Role: Design of Syllabus & Delivery

THEMES: **RESEARCH METHODS**

1989-92

LAN 201F: Second Year Design Studio

Role: Design of Syllabus & Delivery

THEMES: **DESIGN STUDIO**



1987-1989

LAN 402S: Fourth Year Computer-Aided Design Studio

Role: Design of Syllabus & Delivery

THEMES: **COMPUTER AIDED DESIGN - VISUALIZATION**



1986-1994

LAN 352F / ARC 351F: Advanced Computer Applications

Role: Design of Syllabus & Delivery

THEMES: **COMPUTER AIDED DESIGN - VISUALIZATION**



1989-1990

LAN 390S: Independent Study in Computing

Role: Design of Syllabus & Delivery

THEMES: **COMPUTER AIDED DESIGN - VISUALIZATION**

1987-1988

ALA 201F: Building and Site Studio

Role: Co-Teaching - B. Sampson

THEMES: **DESIGN STUDIO**

1986-1987

ALA 102S: Studio: Introductory Problems I

Role: Co-teaching

THEMES: **DESIGN STUDIO**

1985-1987

ALA 316S: Computers in Arch. and Landscape Architecture

Role: Co-Design of Syllabus & Delivery with G. Banz

THEMES: **VISUALIZATION** - **URBAN DESIGN METRICS**



1985-1986

LAN 302S: Site Planning Studio

Role: Design of Syllabus & Delivery

THEMES: **SITE PLANNING STUDIO** - **SITE METRICS**



1985-1986

LAN 501F: Community Open Space Design

Role: Design of Syllabus & Delivery

THEMES: **URBAN DESIGN** - **COMPUTER AIDED DESIGN** - **VISUALIZATION**

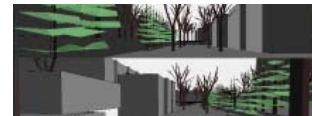


1985-1986

LAN 401F: Joint Studio: Computer Aided Design

Role: Design of Syllabus & Delivery

THEMES: **COMPUTER AIDED DESIGN** - **VISUALIZATION**



1984-1985

LAN 401F: Joint Studio: Behaviour Setting Approaches

Role: Design of Syllabus & Delivery

THEMES: **DESIGN STUDIO** - **BEHAVIOUR**

1984-1985

LAN 502S: Senior Design Studio – Thesis

Role: Design of Syllabus & Delivery

THEMES: **DESIGN THESIS**

1984-1985

LAN 403F: Senior Seminar

Role: Design of Syllabus & Delivery

THEMES: **DESIGN THEORY & RESEARCH**

1981-1985

LAN 272F: Site Planning I

Role: Design of Syllabus & Delivery

THEMES: **SITE PLANNING** - **VISUALIZATION**



1981-1985

LAN 273S: Site Planning II

Role: Design of Syllabus & Delivery

THEMES: **ADVANCED SITE PLANNING** - **VISUALIZATION** - **URBAN METRICS**



1981-1983

LAN 101Y: Design One

Role: Co-Design of Syllabus & Delivery with W. Rock & F. Salvatori

THEMES: **DESIGN STUDIO** - **LANDSCAPE PLANNING** - **GIS** - **GEODESIGN**



1981-1983

LAN 130F: Introduction to Landscape Architecture

Role: Design of Syllabus & Delivery

THEMES: **PROFESSION OF LANDSCAPE ARCHITECTURE**

1981-1983

LAN 160S: Human Factors in Landscape Architecture

Role: Design of Syllabus & Delivery

THEMES: **HUMAN CENTRED DESIGN** - **URBANITY**

1981-1991

LAN 390S/F: Independent Studies